

Citrate synthetase polyclonal antibody

Catalog: BS90304

Host: Rabbit

Reactivity: Human, Mouse, Rat

BackGround:

Citrate synthase is found in nearly all cells capable of oxidative metabolism. The enzyme citrate synthase exists in nearly all living cells and stands as a pace-making enzyme in the first step of the citric acid cycle (or Krebs cycle). Citrate synthase is localized within eukaryotic cells in the mitochondrial matrix, but is encoded by nuclear DNA rather than mitochondrial. It is synthesized using cytoplasmic ribosomes, then transported into the mitochondrial matrix. Citrate synthase is commonly used as a quantitative enzyme marker for the presence of intact mitochondria.

Product:

Rabbit IgG, 1mg/ml in PBS with 0.02% sodium azide, 50% glycerol, pH7.2

Molecular Weight:

52 kDa

Swiss-Prot:

O75390(Human) Q9CZU6(Mouse) Q8VHF5(Rat)

Purification&Purity:

ProA affinity purified

Applications:

WB:1:500-1:1,000

IHC:1:50-1:100

FC:1:50-1:200

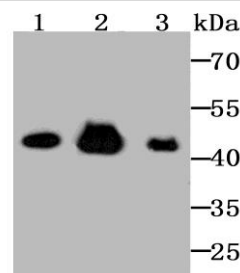
Storage&Stability:

Store at +4 °C after thawing. Aliquot store at -20 °C or -80 °C. Avoid repeated freeze / thaw cycles.

Specificity:

Citrate synthetase polyclonal antibody detects endogenous levels of Citrate synthetase protein.

DATA:



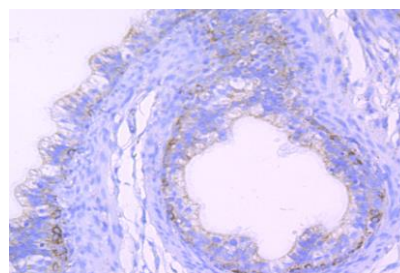
Western blot analysis of Citrate synthetase on Hela cell using anti-Citrate synthetase antibody at 1/1,000 dilution.

Positive control:

Lane 1: Rat kidney tissue

Lane 2: Hela

Lane 3: Mouse brain tissue



Immunohistochemical analysis of paraffin-embedded rat epididymis tissue using anti-Citrate synthetase antibody. Counter stained with hematoxylin.

Note:

For research use only, not for use in diagnostic procedure.

Bioworld Technology, Inc.

Add: 1660 South Highway 100, Suite 500 St. Louis Park, MN 55416, USA.

Email: info@bioworld.com

Tel: 6123263284

Fax: 6122933841

Bioworld technology, co. Ltd.

Add: No 9, weidi road Qixia District Nanjing, 210046, P. R. China.

Email: info@biogot.com

Tel: 0086-025-68037686

Fax: 0086-025-68035151