

Chromogranin A polyclonal antibody

Catalog: BS90301

Host: Rabbit

Reactivity: Human, mouse, rat

BackGround:

Chromogranin A is a member of the chromogranin/secretogranin family of neuroendocrine secretory proteins. It is located in secretory vesicles of neurons and endocrine cells. Chromogranin A is the precursor to several functional peptides including vasostatin, pancreastatin, catestatin and parastatin. These peptides negatively modulate the neuroendocrine function of the releasing cell (autocrine) or nearby cells (paracrine). Chromogranin A might promote the generation of secretory granules. It is used as an indicator for pancreas and prostate cancer. It might play a role in early neoplastic progression. It is also elevated in diabetes.

Product:

Rabbit IgG, 1mg/ml in PBS with 0.02% sodium azide, 50% glycerol, pH7.2

Molecular Weight:

86 kDa

Swiss-Prot:

P26339

Purification&Purity:

Peptide affinity purified

Applications:

WB:1:2,000

IHC:1:200

FC:1:100-1:200

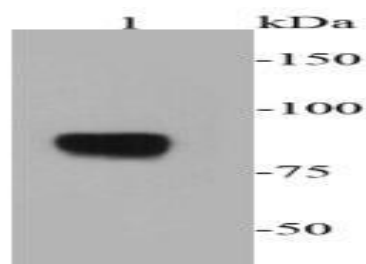
Storage&Stability:

Store at +4 °C after thawing. Aliquot store at -20 °C or -80 °C. Avoid repeated freeze / thaw cycles.

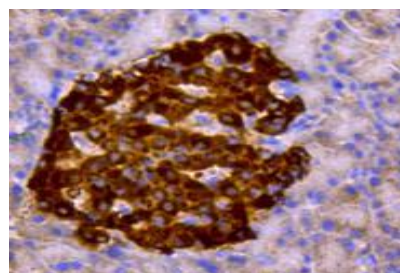
Specificity:

Chromogranin A polyclonal antibody detects endogenous levels of Chromogranin A protein.

DATA:



Western blot analysis of chromogranin A on PC12 cell lysates using anti-chromogranin A antibody at 1/2000 dilution.



Immunohistochemical analysis of paraffin-embedded rat pancreas tissue using anti-chromogranin A antibody. Counter stained with hematoxylin.

Note:

For research use only, not for use in diagnostic procedure.

Bioworld Technology, Inc.

Add: 1660 South Highway 100, Suite 500 St. Louis Park, MN 55416, USA.

Email: info@bioworld.com

Tel: 6123263284

Fax: 6122933841

Bioworld technology, co. Ltd.

Add: No 9, weidi road Qixia District Nanjing, 210046, P. R. China.

Email: info@biogot.com

Tel: 0086-025-68037686

Fax: 0086-025-68035151