

## CD3D polyclonal antibody

Catalog: BS90240

Host: Rabbit

Reactivity: Human

### BackGround:

The T cell antigen receptor (TCR) recognizes foreign antigens and translates such recognition events into intracellular signals that elicit a change in the cell from a dormant to an activated state. Much of this signaling process can be attributed to a multisubunit complex of proteins that associates directly with the TCR. This complex has been designated CD3 (cluster of differentiation 3). It is composed of five invariant polypeptide chains that associate to form three dimers: a heterodimer of gamma and epsilon chains ( $\gamma\epsilon$ ), a heterodimer of delta and epsilon chains ( $\delta\epsilon$ ) and a homodimer of two zeta chains ( $\Omega\Omega$ ) or a heterodimer of zeta and eta chains ( $\Omega\eta$ ). The  $\Omega$  and  $\eta$  chains are encoded by the same gene but differ in their carboxyl-terminal ends due to an alternative splicing event. The  $\gamma$ ,  $\epsilon$  and  $\delta$  chains each contain a single copy of a conserved immunoreceptor tyrosine-based activation motif (ITAM). In contrast, the  $\Omega$  chain contains three consecutive copies of the same motif. Phosphorylated ITAMs act as docking sites for protein kinases such as ZAP-70 and Syk and are also capable of regulating their kinase activity. The crystal structure of the ZAP-70 SH2 domains bound to the  $\Omega$  chain ITAMs has been solved.

### Product:

Rabbit IgG, 1mg/ml in PBS with 0.02% sodium azide, 50% glycerol, pH7.2

### Molecular Weight:

19 kDa

### Swiss-Prot:

P04234(Human)

### Purification&Purity:

ProA affinity purified

### Applications:

WB:1:1,000-1:2,000

ICC:1:100-1:500

IHC:1:50-1:200

FC:1:50-1:100

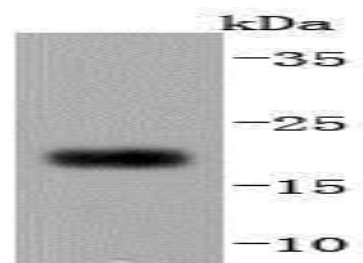
### Storage&Stability:

Store at +4 °C after thawing. Aliquot store at -20 °C or -80 °C. Avoid repeated freeze / thaw cycles.

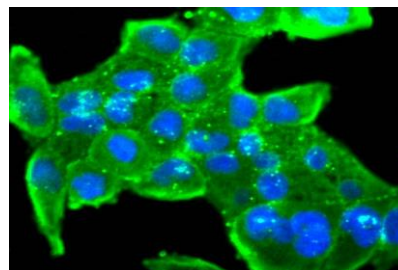
### Specificity:

CD3D polyclonal antibody detects endogenous levels of CD3D protein.

### DATA:



Western blot analysis of CD3D on Jurkat cells lysates using anti-CD3D antibody at 1/1,000 dilution.



ICC staining CD3D in HeLa cells (green). The nuclear counter stain is DAPI (blue). Cells were fixed in paraformaldehyde, permeabilised with 0.25% Triton X100/PBS.

### Note:

For research use only, not for use in diagnostic procedure.

### Bioworld Technology, Inc.

Add: 1660 South Highway 100, Suite 500 St. Louis Park, MN 55416, USA.

Email: [info@bioworld.com](mailto:info@bioworld.com)

Tel: 6123263284

Fax: 6122933841

### Bioworld technology, co. Ltd.

Add: No 9, weidi road Qixia District Nanjing, 210046, P. R. China.

Email: [info@biogot.com](mailto:info@biogot.com)

Tel: 0086-025-68037686

Fax: 0086-025-68035151