

CACNA1C polyclonal antibody

Catalog: BS90161

Host: Rabbit

Reactivity: Human, Mouse, Rat

BackGround:

Pore-forming, alpha-1C subunit of the voltage-gated calcium channel that gives rise to L-type calcium currents. Mediates influx of calcium ions into the cytoplasm, and thereby triggers calcium release from the sarcoplasm. Plays an important role in excitation-contraction coupling in the heart. Required for normal heart development and normal regulation of heart rhythm. Required for normal contraction of smooth muscle cells in blood vessels and in the intestine. Essential for normal blood pressure regulation via its role in the contraction of arterial smooth muscle cells. Long-lasting (L-type) calcium channels belong to the 'high-voltage activated' (HVA) group (Probable).

Product:

Rabbit IgG, 1mg/ml in PBS with 0.02% sodium azide, 50% glycerol, pH7.2

Molecular Weight:

249 kDa

Swiss-Prot:

Q13936(Human) Q01815(Mouse) P22002(Rat)

Purification&Purity:

Peptide affinity purified.

Applications:

DotBlot:1:500-1:1,000

ICC:1:500-1:2,000

IHC:1:50-1:200

FC:1:50-1:100

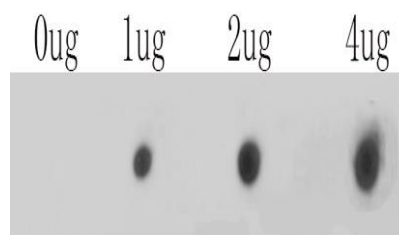
Storage&Stability:

Store at +4 °C after thawing. Aliquot store at -20 °C. Avoid repeated freeze / thaw cycles.

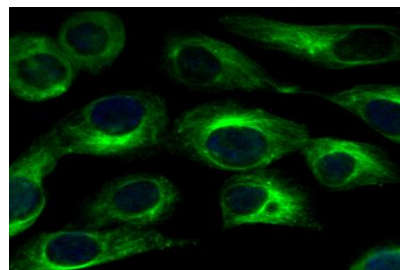
Specificity:

CACNA1C polyclonal antibody detects endogenous levels of CACNA1C protein.

DATA:



Dot blot analysis of anti-CACNA1C on PVDF. 1ug, 2ug and 4ug of immunization peptides were given in this test. Anti-CACNA1C antibody was diluted with 1/500.



ICC staining CACNA1C in SKOV-3 cells (green). The nuclear counter stain is DAPI (blue). Cells were fixed in paraformaldehyde, permeabilised with 0.25% Triton X100/PBS.

Note:

For research use only, not for use in diagnostic procedure.

Bioworld Technology, Inc.

Add: 1660 South Highway 100, Suite 500 St. Louis Park, MN 55416, USA.

Email: info@bioworld.com

Tel: 6123263284

Fax: 6122933841

Bioworld technology, co. Ltd.

Add: No 9, weidi road Qixia District Nanjing, 210046, P. R. China.

Email: info@biogol.com

Tel: 0086-025-68037686

Fax: 0086-025-68035151