

## BubR1 polyclonal antibody

Catalog: BS90152

Host: Rabbit

Reactivity: Human

### BackGround:

Human cells contain two related protein kinases, BUB1 and BUBR1, that appear to have evolved from a single ancestral BUB1 gene. Both kinases are concentrated near the surface of the kinetochore where they monitor kinetochore-microtubule interactions. BUB1 and BUBR1 bind to kinetochores and are postulated to be components of the mitotic checkpoint, which monitors kinetochore activities to determine if chromosomes have achieved alignment at the spindle equator. BUBR1 is essential for normal mitotic progression as it prevents cells from prematurely entering anaphase. BUB3 is a conserved component of the mitotic spindle assembly complex and is also involved with the essential spindle checkpoint pathway that operates during early embryogenesis.

### Product:

Rabbit IgG, 1mg/ml in PBS with 0.02% sodium azide, 50% glycerol, pH7.2

### Molecular Weight:

119 kDa

### Swiss-Prot:

O60566(Human)

### Purification&Purity:

Protein affinity purified.

### Applications:

WB:1:5,000-1:10,000

ICC:1:50-1:200

IHC:1:50-1:200

FC:1:50-1:100

### Storage&Stability:

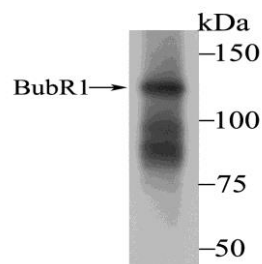
Store at +4 °C after thawing. Aliquot store at -20 °C. Avoid

repeated freeze / thaw cycles.

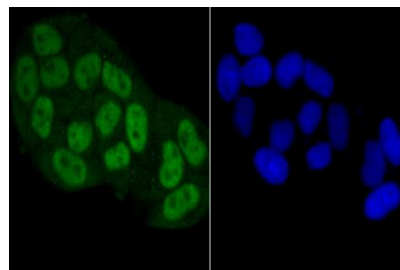
### Specificity:

BubR1 polyclonal antibody detects endogenous levels of BubR1 protein.

### DATA:



Western blot analysis of BubR1 on SH-SY-5Y cell lysate using anti-BubR1 antibody at 1/10,000 dilution.



ICC staining BubR1 in HeLa cells (green). The nuclear counter stain is DAPI (blue). Cells were fixed in paraformaldehyde, permeabilised with 0.25% Triton X100/PBS.

### Note:

For research use only, not for use in diagnostic procedure.

### Bioworld Technology, Inc.

Add: 1660 South Highway 100, Suite 500 St. Louis Park, MN 55416, USA.

Email: [info@bioworld.com](mailto:info@bioworld.com)

Tel: 6123263284

Fax: 6122933841

### Bioworld technology, co. Ltd.

Add: No 9, weidi road Qixia District Nanjing, 210046, P. R. China.

Email: [info@biogot.com](mailto:info@biogot.com)

Tel: 0086-025-68037686

Fax: 0086-025-68035151