

ApoER2 polyclonal antibody

Catalog: BS90079

Host: Rabbit

Reactivity: Human, Mouse

BackGround:

ApoER2 (apolipoprotein E receptor 2), also designated LRP8, is a member of the LDL receptor gene family, which includes LDL receptor, LRP, megalin, VLDLR and ApoER2. The LDL receptor family is characterized by a cluster of cysteine-rich class A repeats, epidermal growth factor (EGF)-like repeats, YWTD repeats and an O-linked sugar domain. ApoER2 is expressed in brain and placenta and has several splice variants. ApoER2 is thought to mediate the interaction of extracellular Reelin and cytosolic mDab1 (mammalian disabled protein), which activates a tyrosine kinase. This pathway regulates the migration of neurons along the radial glial fiber network during brain development.

Product:

Rabbit IgG, 1mg/ml in PBS with 0.02% sodium azide, 50% glycerol, pH7.2

Molecular Weight:

77 kDa

Swiss-Prot:

Q14114(Human) Q924X6(Mouse)

Purification&Purity:

Protein affinity purified.

Applications:

WB:1:500-1:1,000

ICC:1:50-1:200

IHC:1:50

FC:1:50-1:100

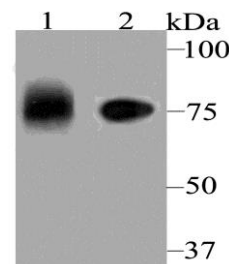
Storage&Stability:

Store at +4 °C after thawing. Aliquot store at -20 °C. Avoid repeated freeze / thaw cycles.

Specificity:

ApoER2 polyclonal antibody detects endogenous levels of ApoER2 protein.

DATA:

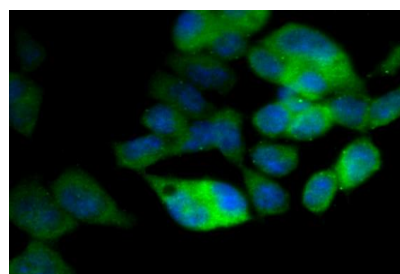


Western blot analysis of ApoER2 on different lysates using anti-ApoER2 antibody at 1/1,000 dilution.

Positive control:

Lane1: Mouse placenta

Lane2: SH-SY-5Y



ICC staining ApoER2 in F9 cells (green). The nuclear counter stain is DAPI (blue). Cells were fixed in paraformaldehyde, permeabilised with 0.25% Triton X100/PBS.

Note:

For research use only, not for use in diagnostic procedure.

Bioworld Technology, Inc.

Add: 1660 South Highway 100, Suite 500 St. Louis Park, MN 55416, USA.

Email: info@bioworld.com

Tel: 6123263284

Fax: 6122933841

Bioworld technology, co. Ltd.

Add: No 9, weidi road Qixia District Nanjing, 210046, P. R. China.

Email: info@biogot.com

Tel: 0086-025-68037686

Fax: 0086-025-68035151