

## NGFRAP1 polyclonal antibody

Catalog: BS8819

Host: Rabbit

Reactivity: Human, Mouse

### Background:

Bex3, also known as p75NTR-associated cell death executor (NADE), nerve growth factor receptor-associated protein 1 or ovarian granulosa cell 13 kDa protein HGR74, is a member of the Bex family involved in zinc-triggered neuronal cell death. It can be found in prostate, testis, liver, ovarian granulosa cells and seminal vesicle tissue shuttling between the cytoplasm and the nucleus. Bex3 interacts with Smac (second mitochondria-derived activator of caspase) via its C-terminal and regulates apoptosis by the inhibition of Smac ubiquitination. Bex3 also interacts with itself and the NGFR p75 DEATH domain. Bex3 may play a significant role in the pathogenesis of neurogenetic diseases.

### Product:

Rabbit IgG, 1mg/ml in PBS with 0.02% sodium azide, 50% glycerol, pH7.2

### Molecular Weight:

~ 24 kDa

### Swiss-Prot:

Q00994

### Purification&Purity:

The antibody was affinity-purified from rabbit antiserum by affinity-chromatography using epitope-specific immunogen and the purity is > 95% (by SDS-PAGE).

### Applications:

WB: 1:500~1:2000

IF: 1:50~1:200

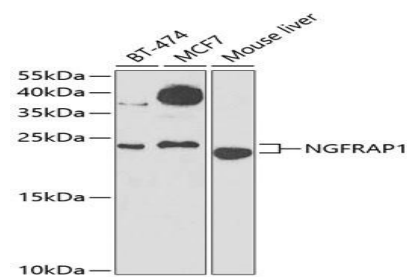
### Storage&Stability:

Store at 4 °C short term. Aliquot and store at -20 °C long term. Avoid freeze-thaw cycles.

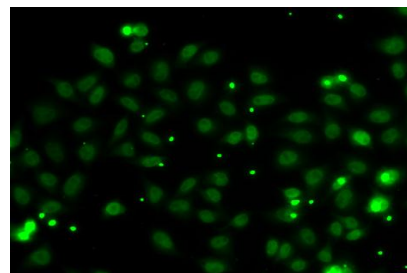
### Specificity:

NGFRAP1 polyclonal antibody detects endogenous levels of NGFRAP1 protein.

### DATA:



Western blot analysis of extracts of various cell lines, using NGFRAP1 Antibody.



Immunofluorescence analysis of MCF-7 cells using NGFRAP1 antibody.

### Note:

For research use only, not for use in diagnostic procedure.

### Bioworld Technology, Inc.

Add: 1660 South Highway 100, Suite 500 St. Louis Park, MN 55416, USA.

Email: [info@bioworld.com](mailto:info@bioworld.com)

Tel: 6123263284

Fax: 6122933841

### Bioworld technology, co. Ltd.

Add: No 9, weidi road Qixia District Nanjing, 210046, P. R. China.

Email: [info@biogot.com](mailto:info@biogot.com)

Tel: 0086-025-68037686

Fax: 0086-025-68035151