

ATRIP polyclonal antibody

Catalog: BS8739

Host: Rabbit

Reactivity: Human, Mouse, Rat

Background:

The product of the ATRIP gene is an essential component of the DNA damage checkpoint, and binds to single stranded DNA coated with replication protein A that accumulates at sites of DNA damage. The encoded protein interacts with the ataxia telangiectasia and Rad3 related protein, a checkpoint kinase, resulting in accumulation of the kinase at intranuclear foci induced by DNA damage. Multiple transcript variants encoding different isoforms have been found for this gene.

Product:

Rabbit IgG, 1mg/ml in PBS with 0.02% sodium azide, 50% glycerol, pH7.2

Molecular Weight:

~ 95 kDa

Swiss-Prot:

Q8WXE1

Purification&Purity:

The antibody was affinity-purified from rabbit antiserum by affinity-chromatography using epitope-specific immunogen and the purity is > 95% (by SDS-PAGE).

Applications:

WB 1:500 - 1:1000

IHC 1:50 - 1:200

IF 1:50 - 1:200

ICC 1:50 - 1:200

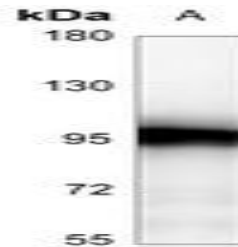
Storage&Stability:

Store at 4 °C short term. Aliquot and store at -20 °C long term. Avoid freeze-thaw cycles.

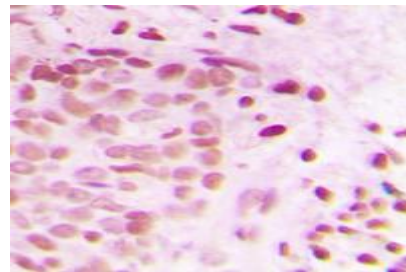
Specificity:

ATRIP polyclonal antibody detects endogenous levels of ATRIP protein.

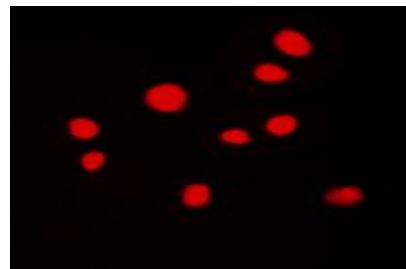
DATA:



Western blot analysis of ATRIP expression in Jurkat (A) whole cell lysates.



Immunohistochemical analysis of ATRIP staining in human breast cancer formalin fixed paraffin embedded tissue section.



Immunofluorescent analysis of ATRIP staining in MCF-7 cells.

Note:

For research use only, not for use in diagnostic procedure.

Bioworld Technology, Inc.

Add: 1660 South Highway 100, Suite 500 St. Louis Park, MN 55416, USA.

Email: info@bioworld.com

Tel: 6123263284

Fax: 6122933841

Bioworld technology, co. Ltd.

Add: No 9, weidi road Qixia District Nanjing, 210046, P. R. China.

Email: info@biogot.com

Tel: 0086-025-68037686

Fax: 0086-025-68035151