

## PLSCR1 polyclonal antibody

Catalog: BS8540

Host: Rabbit

Reactivity: Human,Rat,Mouse

### BackGround:

Phospholipid scramblase 1 (PLSCR1) is 1 of 4 scramblases encoded in the human genome. Phospholipid scramblases function to catalyze calcium-mediated ATP-independent mobilization of phospholipids between the inner and outer leaflet of plasma membrane in activated, injured, or apoptotic cells. PLSCR1 is a type-II transmembrane protein with a short 9 amino acid C-terminal domain and a long N-terminal extracellular domain. Although PLSCR1 is part of a family of proteins that function to catalyze phospholipid mobilization, PLSCR1 may have alternative functions. Rather, PLSCR1 may function to activate cell signaling pathways, particularly in phagocytic cells of monocyte/macrophage lineage. Microglia, resident macrophages of the brain, play a key role in clearance of cellular and pathologic debris where altered phagocytosis may contribute to neurodegenerative diseases like Alzheimer's disease. PLSCR1 may regulate microglia phagocytosis, representing a potential therapeutic target to modulate microglia phagocytosis.

### Product:

Rabbit IgG, 1mg/ml in PBS with 0.02% sodium azide, 50% glycerol, pH7.2

### Molecular Weight:

~ 36 kDa

### Swiss-Prot:

O15162

### Purification&Purity:

The antibody was affinity-purified from rabbit antiserum by affinity-chromatography using epitope-specific immunogen and the purity is > 95% (by SDS-PAGE).

### Applications:

WB: 1:500~1:1000

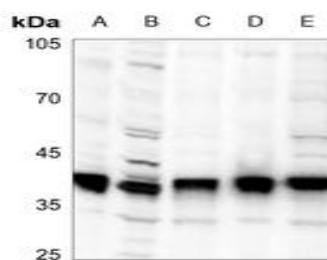
### Storage&Stability:

Store at 4 °C short term. Aliquot and store at -20 °C long term. Avoid freeze-thaw cycles.

### Specificity:

PLSCR1 polyclonal antibody detects endogenous levels of PLSCR1 protein.

### DATA:



Western blot (WB) analysis of PLSCR1 polyclonal antibody at 1:500 dilution

LaneA:H9C2 whole cell lysate(40ug)

LaneB:CT26 whole cell lysate(40ug)

LaneC:HepG2 whole cell lysate(40ug)

LaneD:HCT116 whole cell lysate(40ug)

### Note:

For research use only, not for use in diagnostic procedure.

### Bioworld Technology, Inc.

Add: 1660 South Highway 100, Suite 500 St. Louis Park, MN 55416, USA.

Email: [info@bioworld.com](mailto:info@bioworld.com)

Tel: 6123263284

Fax: 6122933841

### Bioworld technology, co. Ltd.

Add: No 9, weidi road Qixia District Nanjing, 210046, P. R. China.

Email: [info@biogot.com](mailto:info@biogot.com)

Tel: 0086-025-68037686

Fax: 0086-025-68035151