

## C1R polyclonal antibody

Catalog: BS8518

Host: Rabbit

Reactivity: Human, Mouse, Rat

### BackGround:

The complement component proteins, C1, C3, C4, and C5, are potent anaphylatoxins that are released during complement activation. Binding of these proteins to their respective G protein-coupled receptors induces pro-inflammatory events, such as cellular degranulation, smooth muscle contraction, arachidonic acid metabolism, cytokine release, leukocyte activation, and cellular chemotaxis. C1q, together with proenzymes C1r and C1s, yield C1, the first component of the classical pathways of the serum complement system. C1 consists of a calcium dependent trimolecular complex of C1r, C1s and C1q in a 2:2:1 ratio. C1r is a dimer formed of two identical chains that are activated by cleavage into two chains, A and B.

### Product:

Rabbit IgG, 1mg/ml in PBS with 0.02% sodium azide, 50% glycerol, pH7.2

### Molecular Weight:

~ 55 kDa

### Swiss-Prot:

P00736

### Purification&Purity:

The antibody was affinity-purified from rabbit antiserum by affinity-chromatography using epitope-specific immunogen and the purity is > 95% (by SDS-PAGE).

### Applications:

WB, 1:500 - 1:1000 | IF/ICC, 1:50 - 1:200

### Storage&Stability:

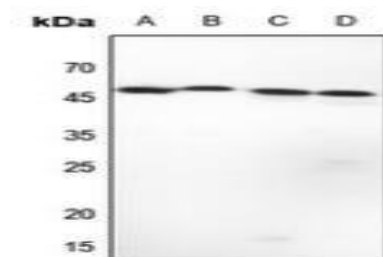
Store at 4 °C short term. Aliquot and store at -20 °C long

term. Avoid freeze-thaw cycles.

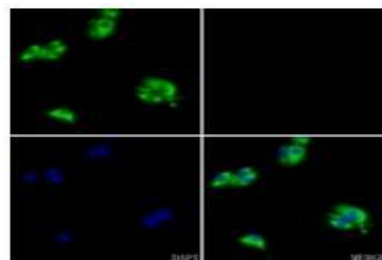
### Specificity:

C1R polyclonal antibody detects endogenous levels of C1R protein.

### DATA:



Western blot analysis of Complement C1R expression in Hela (A), A549 (B), mouse liver (C), rat liver (D) whole cell lysates.



Immunofluorescent analysis of Complement C1R staining in C6 cells.

### Note:

For research use only, not for use in diagnostic procedure.

### Bioworld Technology, Inc.

Add: 1660 South Highway 100, Suite 500 St. Louis Park, MN 55416, USA.

Email: [info@bioworld.com](mailto:info@bioworld.com)

Tel: 6123263284

Fax: 6122933841

### Bioworld technology, co. Ltd.

Add: No 9, weidi road Qixia District Nanjing, 210046, P. R. China.

Email: [info@biogot.com](mailto:info@biogot.com)

Tel: 0086-025-68037686

Fax: 0086-025-68035151