

CPE polyclonal antibody

Catalog: BS8476

Host: Rabbit

Reactivity: Human, Mouse

BackGround:

CPN is a tetrameric complex consisting of two identical regulatory subunits (CPN reg) and two identical catalytic subunits (CPN cat). CPN reg is a member of the leucine-rich repeat family of proteins and CPN cat is a member of the regulatory B-type carboxypeptidase group. Carboxypeptidase E (CPE) is important for removing any remaining C-terminal Arg or Lys after initial endoprotease cleavage during prohormone processing. CPE is also crucial in proinsulin processing, and required for normal-sized photoreceptor synaptic terminal and normal signal transmission to the inner retina.

Product:

1mg/ml in PBS with 0.1% Sodium Azide, 50% Glycerol.

Molecular Weight:

~ 53kDa

Swiss-Prot:

P16870

Purification&Purity:

The antibody was affinity-purified from rabbit antiserum by affinity-chromatography using epitope-specific immunogen and the purity is > 95% (by SDS-PAGE).

Applications:

WB: 1:500~1:2000

IF: 1:50~1:200

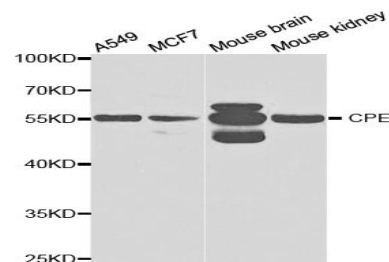
Storage&Stability:

Store at 4 °C short term. Aliquot and store at -20 °C long term. Avoid freeze-thaw cycles.

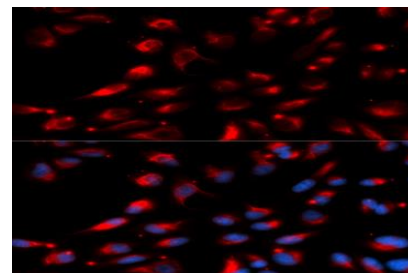
Specificity:

CPE polyclonal antibody detects endogenous levels of CPE protein.

DATA:



Western blot analysis of extracts of various cell lines, using CPE antibody.



Immunofluorescence analysis of U20S cell using CPE antibody. Blue: DAPI for nuclear staining.

Note:

For research use only, not for use in diagnostic procedure.

Bioworld Technology, Inc.

Add: 1660 South Highway 100, Suite 500 St. Louis Park, MN 55416, USA.

Email: info@bioworld.com

Tel: 6123263284

Fax: 6122933841

Bioworld technology, co. Ltd.

Add: No 9, weidi road Qixia District Nanjing, 210046, P. R. China.

Email: info@biogot.com

Tel: 0086-025-68037686

Fax: 0086-025-68035151