

## ERCC1 polyclonal antibody

Catalog: BS8468

Host: Rabbit

Reactivity: Human, Mouse, Rat

### BackGround:

Xeroderma pigmentosum (XP) is an autosomal recessive disorder characterized by a genetic predisposition to sun-light-induced skin cancer; it is commonly due to deficiencies in DNA repair enzymes. The most frequent mutations are found in the XP genes from group A through G and group V, which encode for nucleotide excision repair proteins. XPF, which is also designated ERCC4 or ERCC11, associates directly with the excision repair cross-complementing 1 (ERCC1) factor. ERCC1, a functional homolog of Rad10 in *S. cerevisiae*, is a component of a structure-specific endonuclease that is responsible for 5' incisions during DNA repair. The ERCC1-XPF endonuclease preferentially cleaves one strand of DNA between duplex and single-stranded regions near borders of the stem-loop structure and, thereby, contributes to the initial steps of the nucleotide excision repair process.

### Product:

Rabbit IgG, 1mg/ml in PBS with 0.02% sodium azide, 50% glycerol, pH7.2

### Molecular Weight:

~ 38kDa

### Swiss-Prot:

P07992

### Purification&Purity:

The antibody was affinity-purified from rabbit antiserum by affinity-chromatography using epitope-specific immunogen and the purity is > 95% (by SDS-PAGE).

### Applications:

WB 1:500 - 1:2000

IF 1:50 - 1:200

### Storage&Stability:

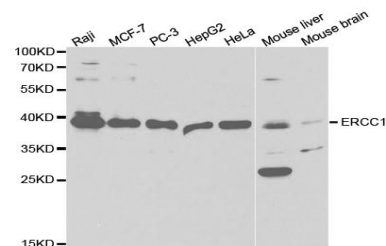
Store at 4 °C short term. Aliquot and store at -20 °C long term. Avoid freeze-thaw cycles.

### Specificity:

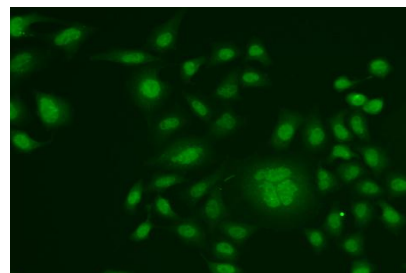
ERCC1 polyclonal antibody detects endogenous levels of

ERCC1 protein.

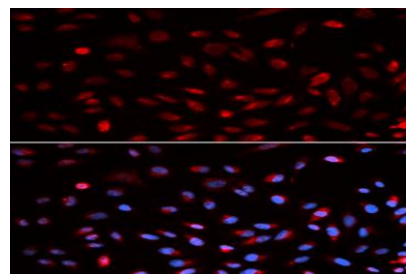
### DATA:



Western blot analysis of extracts of various cell lines, using ERCC1 antibody.



Immunofluorescence analysis of HeLa cells using ERCC1 antibody.



Immunofluorescence analysis of U2OS cells using ERCC1 antibody. Blue: DAPI for nuclear staining.

### Note:

For research use only, not for use in diagnostic procedure.

### Bioworld Technology, Inc.

Add: 1660 South Highway 100, Suite 500 St. Louis Park, MN 55416, USA.

Email: [info@bioworld.com](mailto:info@bioworld.com)

Tel: 6123263284

Fax: 6122933841

### Bioworld technology, co. Ltd.

Add: No 9, weidi road Qixia District Nanjing, 210046, P. R. China.

Email: [info@biogot.com](mailto:info@biogot.com)

Tel: 0086-025-68037686

Fax: 0086-025-68035151



## PRODUCT DATA SHEET

Bioworld Technology, Inc.

---

---

### **Bioworld Technology, Inc.**

**Add:** 1660 South Highway 100, Suite 500 St. Louis Park,  
MN 55416, USA.

**Email:** [info@bioworld.com](mailto:info@bioworld.com)

**Tel:** 6123263284

**Fax:** 6122933841

### **Bioworld technology, co. Ltd.**

**Add:** No 9, weidi road Qixia District Nanjing, 210046,  
P. R. China.

**Email:** [info@biogot.com](mailto:info@biogot.com)

**Tel:** 0086-025-68037686

**Fax:** 0086-025-68035151