

SLC34A1 polyclonal antibody

Catalog: BS8402

Host: Rabbit

Reactivity: Human, Mouse, Rat

BackGround:

Renal tubular reabsorption of phosphate is critical to the maintenance of phosphate homeostasis in mammals. The brush-border membrane Na⁺/Pi cotransport systems in proximal tubules play a major role in this process. The renal Na⁺/P(i) cotransporter NPT2 is expressed in the brush border membrane (BBM) of proximal tubular cells. NPT2 gene expression is crucial for PTH effects on renal P(i) handling. However, renal expression of the sodium/phosphate cotransporter gene, NPT2, is not required for regulation of renal 1 alpha-hydroxylase by phosphate. NPT2 is an integral membrane protein expressed in kidney and lung. The gene encoding human NPT1 maps to chromosome 6q21.3-p23, while the gene encoding human NPT2 maps to chromosome 5q35.

Product:

Rabbit IgG, 1mg/ml in PBS with 0.02% sodium azide, 50% glycerol, pH7.2

Molecular Weight:

~ 72 kDa

Swiss-Prot:

Q06495

Purification&Purity:

The antibody was affinity-purified from rabbit antiserum by affinity-chromatography using epitope-specific im-

munogen and the purity is > 95% (by SDS-PAGE).

Applications:

WB 1:500 - 1:2000

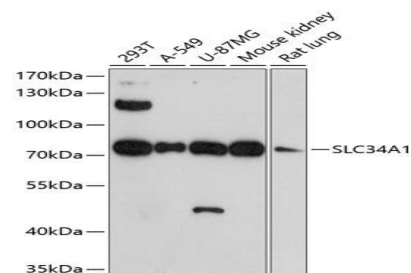
Storage&Stability:

Store at 4 °C short term. Aliquot and store at -20 °C long term. Avoid freeze-thaw cycles.

Specificity:

SLC34A1 polyclonal antibody detects endogenous levels of SLC34A1 protein.

DATA:



Western blot analysis of extracts of various cell lines, using SLC34A1 antibody at 1:1000 dilution.

Note:

For research use only, not for use in diagnostic procedure.

Bioworld Technology, Inc.

Add: 1660 South Highway 100, Suite 500 St. Louis Park, MN 55416, USA.

Email: info@bioworld.com

Tel: 6123263284

Fax: 6122933841

Bioworld technology, co. Ltd.

Add: No 9, weidi road Qixia District Nanjing, 210046, P. R. China.

Email: info@biogot.com

Tel: 0086-025-68037686

Fax: 0086-025-68035151