

SOAT1 polyclonal antibody

Catalog: BS8121

Host: Rabbit

Reactivity: Human, Mouse, Rat

Background:

SOAT1 (sterol O-acyltransferase-1), also designated ACAT1, is a homotetra-meric enzyme that catalyzes the formation of cholesterol esters from cholesterol and long chain fatty acyl-coenzyme A (acyl-CoA). The gene encoding human SOAT1 maps to chromosome 1 and is expressed as a protein that localizes to the endoplasmic reticulum (ER) in several tissues, including liver, kidney, adrenal glands and macrophages. SOAT1 is involved in cellular cholesterol homeostasis as well as in foam cell formation and the subsequent progression of atherosclerosis. Several SOAT inhibitors have been developed for the treatment of atherosclerosis. SOAT2 (sterol O-acyltransferase-2), also known as ACAT2 (acyl-CoA:cholesterol acyltransferase-2), participates in lipo-protein assembly, catalyzing cholesterol esterification in mammalian cells. SOAT2 is an integral membrane protein that localizes to the endoplasmic reticulum of human intestinal cells. SOAT2 deficiency contributes to severe mental retardation and hypotonus.

Product:

Rabbit IgG, 1mg/ml in PBS with 0.02% sodium azide, 50% glycerol, pH7.2

Molecular Weight:

~ 55 kDa

Swiss-Prot:

P35610

Purification&Purity:

The antibody was affinity-purified from rabbit antiserum by affinity-chromatography using epitope-specific immunogen and the purity is > 95% (by SDS-PAGE).

Applications:

WB 1:500 - 1:2000
IF 1:50 - 1:200

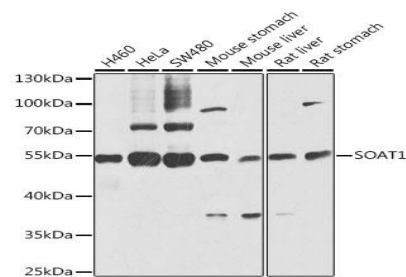
Storage&Stability:

Store at 4 °C short term. Aliquot and store at -20 °C long term. Avoid freeze-thaw cycles.

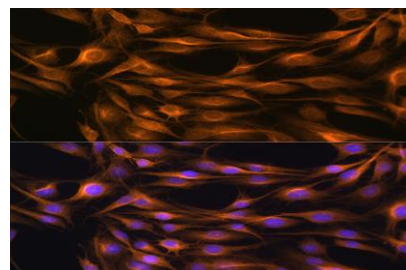
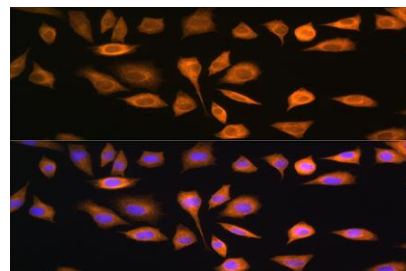
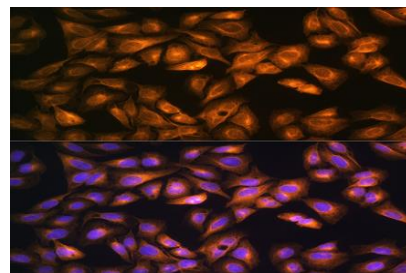
Specificity:

SOAT1 polyclonal antibody detects endogenous levels of SOAT1 protein.

DATA:



WesternBlot (WB) analysis of SOAT1 polyclonal antibody



Note:

For research use only, not for use in diagnostic procedure.

Bioworld Technology, Inc.

Add: 1660 South Highway 100, Suite 500 St. Louis Park, MN 55416, USA.

Email: info@bioworld.com

Tel: 6123263284

Fax: 6122933841

Bioworld technology, co. Ltd.

Add: No 9, weidi road Qixia District Nanjing, 210046, P. R. China.

Email: info@biogot.com

Tel: 0086-025-68037686

Fax: 0086-025-68035151



PRODUCT DATA SHEET

Bioworld Technology, Inc.

Bioworld Technology, Inc.

Add: 1660 South Highway 100, Suite 500 St. Louis Park,
MN 55416, USA.

Email: info@bioworld.com

Tel: 6123263284

Fax: 6122933841

Bioworld technology, co. Ltd.

Add: No 9, weidi road Qixia District Nanjing, 210046,
P. R. China.

Email: info@biogot.com

Tel: 0086-025-68037686

Fax: 0086-025-68035151