

SERPINB1 polyclonal antibody

Catalog: BS7999

Host: Rabbit

Reactivity: Human, Mouse, Rat

BackGround:

The serine proteinase inhibitors (serpins) compose a superfamily of proteins with a diverse set of functions, including the control of blood coagulation, complement activation, programmed cell death and development. Serpins are secreted glycoproteins that contain a stretch of peptide that mimics a true substrate for a corresponding serine protease. The monocyte/neutrophil elastase inhibitor gene, SERPINB1, belongs to the Ov-serpin family (ovalbumin-related serpins). Human SerpinB1, also designated monocyte/neutrophil elastase inhibitor (M/NEI) or leukocyte elastase inhibitor (LEI), is a cytoplasmic protein which acts as a fast-acting stoichiometric proteinase inhibitor that regulates the activity of neutrophil elastase (NE), cathepsin-G and proteinase-3. There are four homologous genes in mouse designated SerpinB1a, SerpinB1b, SerpinB1c and the pseudogene, Serpinb1-ps1. The three protein-coding genes share significant sequence identity, however SerpinB1a (also designated EIA) has been characterized as the functional ortholog of human SerpinB1.

Product:

Rabbit IgG, 1mg/ml in PBS with 0.02% sodium azide, 50% glycerol, pH7.2

Molecular Weight:

~ 43 kDa

Swiss-Prot:

P30740

Purification&Purity:

The antibody was affinity-purified from rabbit antiserum by affinity-chromatography using epitope-specific immunogen and the purity is > 95% (by SDS-PAGE).

Applications:

WB: 1:500~1:2000

IF: 1:50~1:200

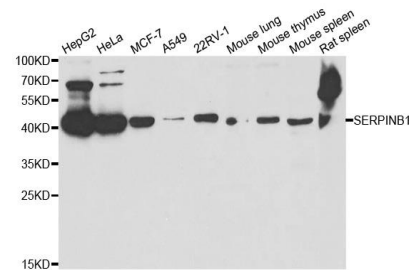
Storage&Stability:

Store at 4 °C short term. Aliquot and store at -20 °C long term. Avoid freeze-thaw cycles.

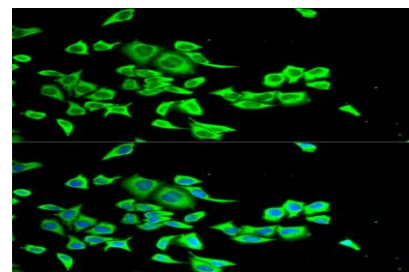
Specificity:

SERPINB1 polyclonal antibody detects endogenous levels of SERPINB1 protein.

DATA:



WesternBlot (WB) analysis of SERPINB1 polyclonal antibody



Immunofluorescence analysis of HeLa cells, using SERPINB1 polyclonal antibody

Note:

For research use only, not for use in diagnostic procedure.

Bioworld Technology, Inc.

Add: 1660 South Highway 100, Suite 500 St. Louis Park, MN 55416, USA.

Email: info@bioworld.com

Tel: 6123263284

Fax: 6122933841

Bioworld technology, co. Ltd.

Add: No 9, weidi road Qixia District Nanjing, 210046, P. R. China.

Email: info@biogot.com

Tel: 0086-025-68037686

Fax: 0086-025-68035151