

NEDD8 polyclonal antibody

Catalog: BS79835

Host: Rabbit

Reactivity: Mouse, Rat

BackGround:

Neural Precursor Cell Expressed Developmentally Downregulated Gene 8 (NEDD8), also known as Related to Ubiquitin 1 (Rub1), is a 6-8 kDa member of the Ubiquitin family of proteins. Human NEDD8 is activated by a distinct NEDD8-activating (E1) enzyme, a heterodimeric complex composed of APPBP1 and UBA3 subunits. Activated NEDD8 is subsequently transferred to the UBE2M/Ubc12 or UBE2F NEDD8-conjugating (E2) enzymes. Through a process termed neddylation, the ROC1/Rbx1 RING Finger E3 ligase transfers NEDD8 to specific substrates. NEDD8 plays a critical regulatory role in cell proliferation and dysregulation of the NEDD8 pathway has been associated with several cancer pathologies.

Product:

1mg/ml in PBS with 0.02% sodium azide, 50% glycerol, pH7.2

Molecular Weight:

13kDa

Swiss-Prot:

Q15843

Purification&Purity:

The antibody was affinity-purified from rabbit antiserum by affinity-chromatography using epitope-specific immunogen and the purity is > 95% (by SDS-PAGE).

Applications:

WB, 1:500 - 1:2000

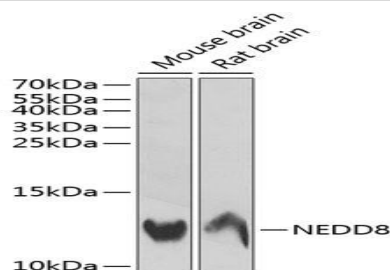
Storage&Stability:

Store at 4 °C short term. Aliquot and store at -20 °C long term. Avoid freeze-thaw cycles.

Modification:

Unmodification

DATA:



Western blot analysis of extracts of various cell lines, using NEDD8 antibody at 1:1000 dilution. Secondary antibody: HRP Goat Anti-Rabbit IgG at 1:10000 dilution. Lysates/proteins: 25ug per lane. Blocking buffer: 3% nonfat dry milk in TBST. Detection: ECL Enhanced Kit. Exposure time: 60s.

Note:

For research use only, not for use in diagnostic procedure.

Bioworld Technology, Inc.

Add: 1660 South Highway 100, Suite 500 St. Louis Park, MN 55416, USA.

Email: info@bioworld.com

Tel: 6123263284

Fax: 6122933841

Bioworld technology, co. Ltd.

Add: No 9, weidi road Qixia District Nanjing, 210046, P. R. China.

Email: info@biogol.com

Tel: 0086-025-68037686

Fax: 0086-025-68035151