

**Kdm6b polyclonal antibody**

Catalog: BS79778

Host: Rabbit

Reactivity: Rat

**BackGround:**

Enables beta-catenin binding activity; histone H3-tri/di-methyl-lysine-27 demethylase activity; and sequence-specific DNA binding activity. Involved in several processes, including histone H3-K27 demethylation; mesodermal cell differentiation; and positive regulation of cold-induced thermogenesis. Acts upstream of or within several processes, including cellular response to hydrogen peroxide; histone demethylation; and positive regulation of transcription by RNA polymerase II. Located in nucleus. Is expressed in several structures, including brain; gut; liver; metanephros; and olfactory epithelium. Orthologous to human KDM6B (lysine demethylase 6B).

**Product:**

1mg/ml in PBS with 0.02% sodium azide, 50% glycerol, pH7.2

**Molecular Weight:**

200kDa

**Swiss-Prot:****Purification&Purity:**

The antibody was affinity-purified from rabbit antiserum by affinity-chromatography using epitope-specific immunogen and the purity is > 95% (by SDS-PAGE).

**Applications:**

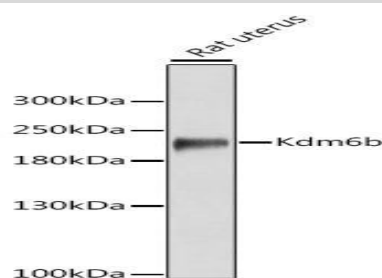
WB, 1:500 - 1:2000

**Storage&Stability:**

Store at 4 °C short term. Aliquot and store at -20 °C long term. Avoid freeze-thaw cycles.

**Modification:**

Unmodification

**DATA:**

Western blot analysis of extracts of various cell lines, using Kdm6b antibody at 1:3000 dilution. Secondary antibody: HRP Goat Anti-Rabbit IgG at 1:10000 dilution. Lysates/proteins: 25ug per lane. Blocking buffer: 3% nonfat dry milk in TBST. Detection: ECL Basic Kit. Exposure time: 90s.

**Note:**

For research use only, not for use in diagnostic procedure.

**Bioworld Technology, Inc.**

Add: 1660 South Highway 100, Suite 500 St. Louis Park, MN 55416, USA.

Email: [info@bioworld.com](mailto:info@bioworld.com)

Tel: 6123263284

Fax: 6122933841

**Bioworld technology, co. Ltd.**

Add: No 9, weidi road Qixia District Nanjing, 210046, P. R. China.

Email: [info@biogot.com](mailto:info@biogot.com)

Tel: 0086-025-68037686

Fax: 0086-025-68035151