

## PINK1 polyclonal antibody

Catalog: BS79658

Host: Rabbit

Reactivity: Human, Mouse, Rat

### BackGround:

PTEN induced putative kinase 1, PINK1, is a mitochondrial serine/threonine kinase involved in the normal function and integrity of mitochondria, as well as in reduction of cytochrome c release from mitochondria. PINK1 phosphorylates Parkin and promotes its translocation to mitochondria. Research studies have shown that mutations in PINK1 are linked to autosomal recessive early onset Parkinson's disease, and are associated with loss of protective function, mitochondrial dysfunction, aggregation of  $\alpha$ -synuclein, as well as proteasome dysfunction.

### Product:

Rabbit IgG, 1mg/ml in PBS with 0.02% sodium azide, 50% glycerol, pH7.2

### Molecular Weight:

~ 60 kDa

### Swiss-Prot:

Q9BXM7

### Purification&Purity:

The antibody was affinity-purified from rabbit antiserum by affinity-chromatography using epitope-specific immunogen and the purity is > 95% (by SDS-PAGE).

### Applications:

WB 1:500 - 1:1000

IHC 1:50 - 1:100

IF 1:50 - 1:100

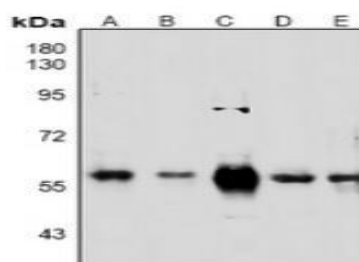
### Storage&Stability:

Store at 4 °C short term. Aliquot and store at -20 °C long term. Avoid freeze-thaw cycles.

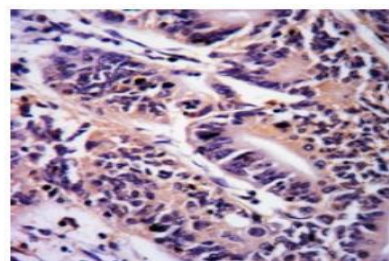
### Specificity:

PINK1 polyclonal antibody detects endogenous levels of PINK1 protein.

### DATA:



Western blot analysis of PINK1 expression in HEK293T (A), MCF7 (B), HCT116 (C), mouse heart (D), rat testis (E) whole cell lysates.



Immunohistochemical analysis of PINK1 staining in human colorectal cancer formalin fixed paraffin embedded tissue section.

### Note:

For research use only, not for use in diagnostic procedure.

### Bioworld Technology, Inc.

Add: 1660 South Highway 100, Suite 500 St. Louis Park, MN 55416, USA.

Email: [info@bioworld.com](mailto:info@bioworld.com)

Tel: 6123263284

Fax: 6122933841

### Bioworld technology, co. Ltd.

Add: No 9, weidi road Qixia District Nanjing, 210046, P. R. China.

Email: [info@biogot.com](mailto:info@biogot.com)

Tel: 0086-025-68037686

Fax: 0086-025-68035151