

LC3B polyclonal antibody

Catalog: BS79637

Host: Rabbit

Reactivity: Human, Mouse, Rat

BackGround:

The product of this gene is a subunit of neuronal microtubule-associated MAP1A and MAP1B proteins, which are involved in microtubule assembly and important for neurogenesis. Studies on the rat homolog implicate a role for this gene in autophagy, a process that involves the bulk degradation of cytoplasmic component.

Product:

Rabbit IgG, 1mg/ml in PBS with 0.02% sodium azide, 50% glycerol, pH7.2

Molecular Weight:

14KDa/16KDa

Swiss-Prot:

Q9GZQ8

Purification&Purity:

The antibody was affinity-purified from rabbit antiserum by affinity-chromatography using epitope-specific immunogen and the purity is > 95% (by SDS-PAGE).

Applications:

WB, 1:500 - 1:2000 | IHC, 1:200 - 1:500 | IF/ICC, 1:100 - 1:200

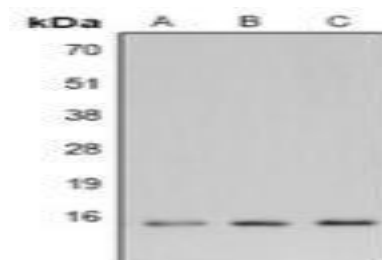
Storage&Stability:

Store at 4 °C short term. Aliquot and store at -20 °C long term. Avoid freeze-thaw cycles.

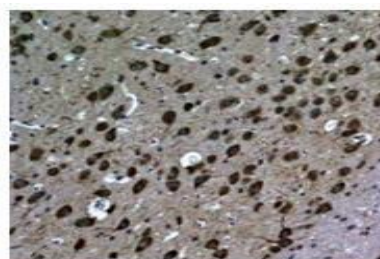
Specificity:

LC3B polyclonal antibody detects endogenous levels of LC3B protein.

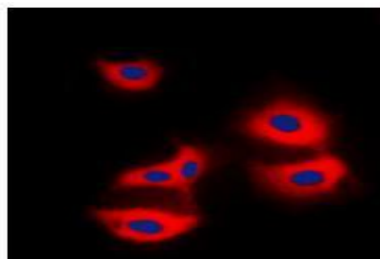
DATA:



Western blot analysis of LC3B expression in Hela (A), NIH3T3 (B), rat brain (C) whole cell lysates.



Immunohistochemical analysis of LC3B staining in rat brain formalin fixed paraffin embedded tissue section.



Immunofluorescent analysis of LC3B staining in Hela cells.

Note:

For research use only, not for use in diagnostic procedure.

Bioworld Technology, Inc.

Add: 1660 South Highway 100, Suite 500 St. Louis Park, MN 55416, USA.

Email: info@bioworld.com

Tel: 6123263284

Fax: 6122933841

Bioworld technology, co. Ltd.

Add: No 9, weidi road Qixia District Nanjing, 210046, P. R. China.

Email: info@biogot.com

Tel: 0086-025-68037686

Fax: 0086-025-68035151