

ATG3 polyclonal antibody

Catalog: BS7872

Host: Rabbit

Reactivity: Human, Mouse, Rat

BackGround:

This gene encodes a ubiquitin-like-conjugating enzyme and is a component of ubiquitination-like systems involved in autophagy, the process of degradation, turnover and recycling of cytoplasmic constituents in eukaryotic cells. This protein is known to play a role in regulation of autophagy during cell death. A pseudogene of this gene is located on chromosome 20. Alternative splicing results in multiple transcript variants encoding different isoforms.

Product:

Rabbit IgG, 1mg/ml in PBS with 0.02% sodium azide, 50% glycerol, pH7.2.

Molecular Weight:

~ 40 kDa

Swiss-Prot:

Q9NT62

Purification&Purity:

The antibody was affinity-purified from rabbit antiserum by affinity-chromatography using epitope-specific immunogen and the purity is > 95% (by SDS-PAGE).

Applications:

WB, 1:500 - 1:2000

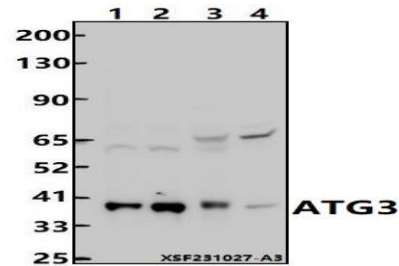
IP: 1:50~1:200

Storage&Stability:

Store at 4 °C short term. Aliquot and store at -20 °C long term. Avoid freeze-thaw cycles.

Specificity:

ATG3 polyclonal antibody detects endogenous levels of ATG3 protein.

DATA:

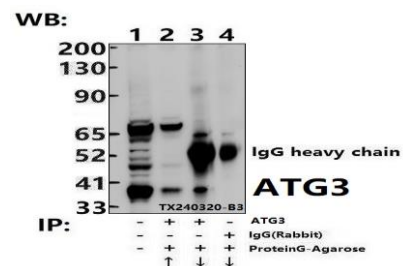
Western blot (WB) analysis of ATG3 pAb at 1:2000 dilution

Lane1:K562 whole cell lysate(30ug)

Lane2:THP-1 whole cell lysate(30ug)

Lane3:BV2 whole cell lysate(30ug)

Lane4:PC12 whole cell lysate(30ug)



Immunoprecipitation of PC12 cell lysates using ATG3 pAb (Sephacose Bead Conjugate)#BD0048 (lane 2 and lane 3) and Nonspecific IgG Control (Sephacose Bead Conjugate)#BD0048 (lane 4). Lane 1 is 30% input. The western blot was probed using ATG3 pAb.

Note:

For research use only, not for use in diagnostic procedure.

Bioworld Technology, Inc.

Add: 1660 South Highway 100, Suite 500 St. Louis Park, MN 55416, USA.

Email: info@bioworld.com

Tel: 6123263284

Fax: 6122933841

Bioworld technology, co. Ltd.

Add: No 9, weidi road Qixia District Nanjing, 210046, P. R. China.

Email: info@biogot.com

Tel: 0086-025-68037686

Fax: 0086-025-68035151