

PRR5 polyclonal antibody

Catalog: BS78305

Host: Rabbit

Reactivity: Arabidopsis thaliana

BackGround:

Encodes a pseudo-response regulator whose mutation affects various circadian-associated biological events such as flowering time in the long-day photoperiod conditions, red light sensitivity of seedlings during early photomorphogenesis, and the period of free-running rhythms of certain clock-controlled genes including CCA1 and APRR1/TOC1 in constant white light. Acts as transcriptional repressor of CCA1 and LHY.

Product:

1mg/ml in PBS with 0.02% sodium azide, 50% glycerol, pH7.2

Molecular Weight:

62KDa

Swiss-Prot:

Q6LA42

Purification&Purity:

The antibody was affinity-purified from rabbit antiserum by affinity-chromatography using epitope-specific immunogen and the purity is > 95% (by SDS-PAGE).

Applications:

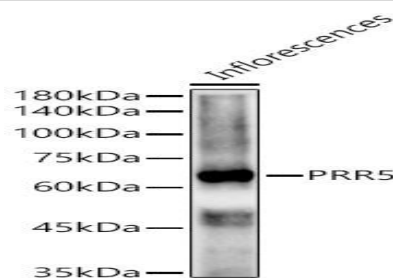
WB, 1:500 - 1:2000

Storage&Stability:

Store at 4 °C short term. Aliquot and store at -20 °C long term. Avoid freeze-thaw cycles.

Modification:

Unmodification

DATA:

Western blot analysis of extracts of Inflorescences from Arabidopsis thaliana, using PRR5 antibody at 1:1566 dilution. Secondary antibody: HRP Goat Anti-Rabbit IgG at 1:10000 dilution. Lysates/proteins: 25ug per lane. Blocking buffer: 3% nonfat dry milk in TBST. Detection: ECL Basic Kit. Exposure time: 180s.

Note:

For research use only, not for use in diagnostic procedure.

Bioworld Technology, Inc.

Add: 1660 South Highway 100, Suite 500 St. Louis Park, MN 55416, USA.

Email: info@bioworld.com

Tel: 6123263284

Fax: 6122933841

Bioworld technology, co. Ltd.

Add: No 9, weidi road Qixia District Nanjing, 210046, P. R. China.

Email: info@biogot.com

Tel: 0086-025-68037686

Fax: 0086-025-68035151