

TIFY10A polyclonal antibody

Catalog: BS78282

Host: Rabbit

Reactivity: Arabidopsis thaliana

BackGround:

JAZ1 is a nuclear-localized protein involved in jasmonate signaling. JAZ1 transcript levels rise in response to a jasmonate stimulus. JAZ1 can interact with the COI1 F-box subunit of an SCF E3 ubiquitin ligase in a yeast-two-hybrid assay only in the presence of jasmonate-isoleucine (JA-ILE) or coronatine. Application of jasmonate methyl ester to Arabidopsis roots reduces the levels of a JAZ1:GUS fusion protein, presumably by stimulating ubiquitin-proteasome-mediated degradation. The Jas domain appears to be important for JAZ1-COI1 interactions in the presence of coronatine. Two positive residues (R205 and R206) in the Jas domain shown to be important for coronatine -dependent COI1 binding are not required for binding AtMYC2.

Product:

1mg/ml in PBS with 0.02% sodium azide, 50% glycerol, pH7.2

Molecular Weight:

32KDa

Swiss-Prot:

Q9LMA8

Purification&Purity:

The antibody was affinity-purified from rabbit antiserum by affinity-chromatography using epitope-specific immunogen and the purity is > 95% (by SDS-PAGE).

Applications:

WB, 1:500 - 1:2000

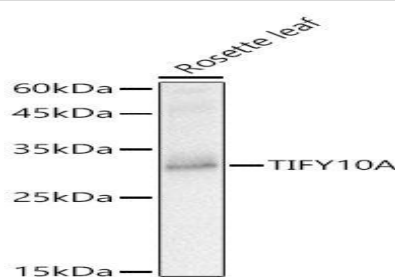
Storage&Stability:

Store at 4 °C short term. Aliquot and store at -20 °C long term. Avoid freeze-thaw cycles.

Modification:

Unmodification

DATA:



Western blot analysis of extracts of Rosette leaf, using TIFY10A antibody at 1:1784 dilution. Secondary antibody: HRP Goat Anti-Rabbit IgG at 1:10000 dilution. Lysates/proteins: 25ug per lane. Blocking buffer: 3% nonfat dry milk in TBST. Detection: ECL Basic Kit. Exposure time: 1s.

Note:

For research use only, not for use in diagnostic procedure.

Bioworld Technology, Inc.

Add: 1660 South Highway 100, Suite 500 St. Louis Park, MN 55416, USA.

Email: info@bioworld.com

Tel: 6123263284

Fax: 6122933841

Bioworld technology, co. Ltd.

Add: No 9, weidi road Qixia District Nanjing, 210046, P. R. China.

Email: info@biogol.com

Tel: 0086-025-68037686

Fax: 0086-025-68035151