

COR28 polyclonal antibody

Catalog: BS78134

Host: Rabbit

Reactivity: Arabidopsis thaliana

BackGround:

Light and temperature are two key environmental signals that profoundly affect plant growth and development, COR28 and COR27 are negative regulators of freezing tolerance but positive regulators of flowering. They are involved in central circadian clock regulation and in flowering promotion, by binding to the chromatin of clock-associated evening genes TOC1, PRR5, ELF4 and cold-responsive genes in order to repress their transcription. And also are direct targets of CCA1, which represses their transcription via chromatin binding.

Product:

1mg/ml in PBS with 0.02% sodium azide, 50% glycerol, pH7.2

Molecular Weight:

30KDa

Swiss-Prot:

Q8L983

Purification&Purity:

The antibody was affinity-purified from rabbit antiserum by affinity-chromatography using epitope-specific immunogen and the purity is > 95% (by SDS-PAGE).

Applications:

WB, 1:500 - 1:2000

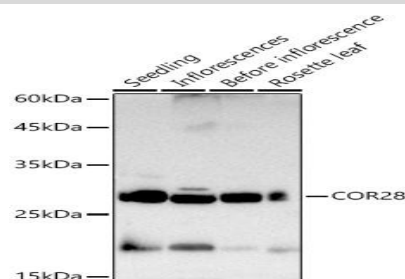
Storage&Stability:

Store at 4 °C short term. Aliquot and store at -20 °C long term. Avoid freeze-thaw cycles.

Modification:

Unmodification

DATA:



Western blot analysis of extracts of various tissues from Arabidopsis thaliana, using COR28 antibody at 1:1000 dilution. Secondary antibody: HRP Goat Anti-Rabbit IgG at 1:10000 dilution. Lysates/proteins: 25ug per lane. Blocking buffer: 3% nonfat dry milk in TBST. Detection: ECL Basic Kit. Exposure time: 30s.

Note:

For research use only, not for use in diagnostic procedure.

Bioworld Technology, Inc.

Add: 1660 South Highway 100, Suite 500 St. Louis Park, MN 55416, USA.

Email: info@bioworld.com

Tel: 6123263284

Fax: 6122933841

Bioworld technology, co. Ltd.

Add: No 9, weidi road Qixia District Nanjing, 210046, P. R. China.

Email: info@biogot.com

Tel: 0086-025-68037686

Fax: 0086-025-68035151