

IL1RN polyclonal antibody

Catalog: BS78121

Host: Rabbit

Reactivity: Human, Mouse

BackGround:

Predicted to enable cytokine receptor binding activity. Acts upstream of or within insulin secretion and lipid metabolic process. Located in extracellular region and vesicle. Human ortholog(s) of this gene implicated in several diseases, including autoimmune disease (multiple); eye disease (multiple); kidney failure (multiple); lung disease (multiple); and vascular disease (multiple). Orthologous to human IL1RN (interleukin 1 receptor antagonist).

Product:

1mg/ml in PBS with 0.02% sodium azide, 50% glycerol, pH7.2

Molecular Weight:

18KDa

Swiss-Prot:

P25085

Purification&Purity:

The antibody was affinity-purified from rabbit antiserum by affinity-chromatography using epitope-specific immunogen and the purity is > 95% (by SDS-PAGE).

Applications:

WB, 1:500 - 1:2000 | IF/ICC, 1:50 - 1:200

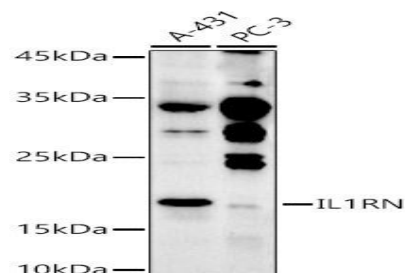
Storage&Stability:

Store at 4 °C short term. Aliquot and store at -20 °C long term. Avoid freeze-thaw cycles.

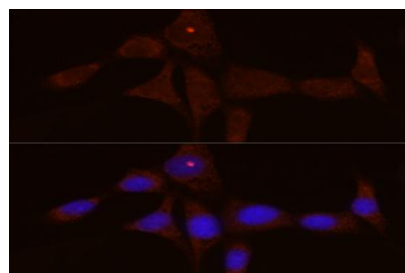
Modification:

Unmodification

DATA:



Western blot analysis of extracts of various cell lines, using IL1RN antibody at 1:500 dilution. Secondary antibody: HRP Goat Anti-Rabbit IgG at 1:10000 dilution. Lysates/proteins: 25ug per lane. Blocking buffer: 3% nonfat dry milk in TBST. Detection: ECL Enhanced Kit. Exposure time: 180s.



Immunofluorescence analysis of NIH/3T3 cells using IL1RN Rabbit pAb at dilution of 1:50. Blue: DAPI for nuclear staining.

Note:

For research use only, not for use in diagnostic procedure.

Bioworld Technology, Inc.

Add: 1660 South Highway 100, Suite 500 St. Louis Park, MN 55416, USA.

Email: info@bioworld.com

Tel: 6123263284

Fax: 6122933841

Bioworld technology, co. Ltd.

Add: No 9, weidi road Qixia District Nanjing, 210046, P. R. China.

Email: info@biogot.com

Tel: 0086-025-68037686

Fax: 0086-025-68035151