

LAGE3 polyclonal antibody

Catalog: BS78057

Host: Rabbit

Reactivity: Human

BackGround:

This gene belongs to the ESO/LAGE gene family, members of which are clustered together on chromosome Xq28, and have similar exon-intron structures. Unlike the other family members which are normally expressed only in testis and activated in a wide range of human tumors, this gene is ubiquitously expressed in somatic tissues. The latter, combined with the finding that it is highly conserved in mouse and rat, suggests that the encoded protein is functionally important. An intronless pseudogene with high sequence similarity to this gene is located on chromosome 9.

Product:

1mg/ml in PBS with 0.02% sodium azide, 50% glycerol, pH7.2

Molecular Weight:

17KDa

Swiss-Prot:

Q14657

Purification&Purity:

The antibody was affinity-purified from rabbit antiserum by affinity-chromatography using epitope-specific immunogen and the purity is > 95% (by SDS-PAGE).

Applications:

WB, 1:500 - 1:2000

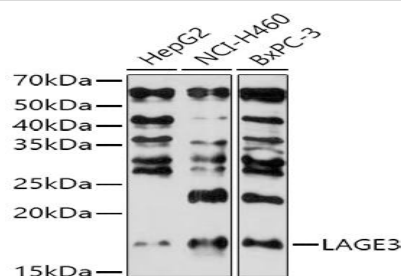
Storage&Stability:

Store at 4 °C short term. Aliquot and store at -20 °C long term. Avoid freeze-thaw cycles.

Modification:

Unmodification

DATA:



Western blot analysis of extracts of various cell lines, using LAGE3 antibody at 1:1000 dilution. Secondary antibody: HRP Goat Anti-Rabbit IgG at 1:10000 dilution. Lysates/proteins: 25ug per lane. Blocking buffer: 3% nonfat dry milk in TBST. Detection: ECL Basic Kit. Exposure time: 180s.

Note:

For research use only, not for use in diagnostic procedure.

Bioworld Technology, Inc.

Add: 1660 South Highway 100, Suite 500 St. Louis Park, MN 55416, USA.

Email: info@bioworld.com

Tel: 6123263284

Fax: 6122933841

Bioworld technology, co. Ltd.

Add: No 9, weidi road Qixia District Nanjing, 210046, P. R. China.

Email: info@biogot.com

Tel: 0086-025-68037686

Fax: 0086-025-68035151