

SLFN11 polyclonal antibody

Catalog: BS78036

Host: Rabbit

Reactivity: Human

BackGround:

Inhibitor of DNA replication that promotes cell death in response to DNA damage. Acts as a guardian of the genome by killing cells with defective replication. Persistently blocks stressed replication forks by opening chromatin across replication initiation sites at stressed replication forks, possibly leading to unwind DNA ahead of the MCM helicase and block fork progression, ultimately leading to cell death. Acts independently of ATR. Also acts as an interferon (IFN-induced antiviral protein which acts as an inhibitor of retrovirus protein synthesis. Specifically abrogates the production of retroviruses such as human immunodeficiency virus 1 (HIV-1 by acting as a specific inhibitor of the synthesis of retroviruses encoded proteins in a codon-usage-dependent manner. Binds to tRNAs and exploits the unique viral codon bias towards A/T nucleotides. The exact inhibition mechanism is unclear: may either sequester tRNAs, prevent their maturation via post-transcriptional processing or may accelerate their deacylation. Does not inhibit reverse transcription, integration or production and nuclear export of viral RNA.

Product:

1mg/ml in PBS with 0.02% sodium azide, 50% glycerol, pH7.2

Molecular Weight:

100KDa

Swiss-Prot:

Q7Z7L1

Purification&Purity:

The antibody was affinity-purified from rabbit antiserum by affinity-chromatography using epitope-specific immunogen and the purity is > 95% (by SDS-PAGE).

Applications:

WB, 1:500 - 1:2000

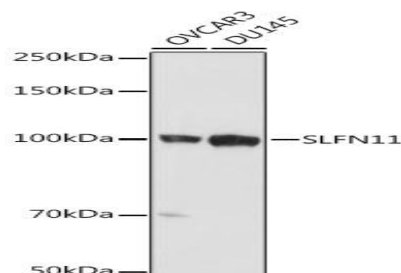
Storage&Stability:

Store at 4 °C short term. Aliquot and store at -20 °C long term. Avoid freeze-thaw cycles.

Modification:

Unmodification

DATA:



Western blot analysis of extracts of various cell lines, using SLFN11 antibody at 1:1000 dilution. Secondary antibody: HRP Goat Anti-Rabbit IgG at 1:10000 dilution. Lysates/proteins: 25ug per lane. Blocking buffer: 3% nonfat dry milk in TBST. Detection: ECL Basic Kit. Exposure time: 10s.

Note:

For research use only, not for use in diagnostic procedure.

Bioworld Technology, Inc.

Add: 1660 South Highway 100, Suite 500 St. Louis Park, MN 55416, USA.

Email: info@bioworld.com

Tel: 6123263284

Fax: 6122933841

Bioworld technology, co. Ltd.

Add: No 9, weidi road Qixia District Nanjing, 210046, P. R. China.

Email: info@biogot.com

Tel: 0086-025-68037686

Fax: 0086-025-68035151