

## PAX4 polyclonal antibody

Catalog: BS7771

Host: Rabbit

Reactivity: Human, Mouse

**BackGround:**

Pax-4 (paired box gene 4) protein influences normal differentiation of insulin-producing beta cells and influences normal pancreatic islet development. Pax-4 protein is a transcriptional repressor that binds to a common cis element in the Glucagon, insulin and Somatostatin promoters. Mouse Pax-4 transcript is present in pancreatic islets, and the islet  $\beta$  cell lines MIN6,  $\beta$  TC, and NIT1. Differentiation of endoderm-derived endocrine pancreas is mediated through Pax-4 and Pax-6. Pax-4 may act as a Pax-6 repressor due to the competition for binding sites and lower transactivation potential of Pax-4. The human Pax-4 gene encodes a deduced 350 amino acid protein that is 80% identical to the deduced mouse Pax-4 protein.

**Product:**

1mg/ml in PBS with 0.1% Sodium Azide, 50% Glycerol.

**Molecular Weight:**

~ 37 kDa

**Swiss-Prot:**

O43316

**Purification&Purity:**

The antibody was affinity-purified from rabbit antiserum by affinity-chromatography using epitope-specific immunogen and the purity is > 95% (by SDS-PAGE).

**Applications:**

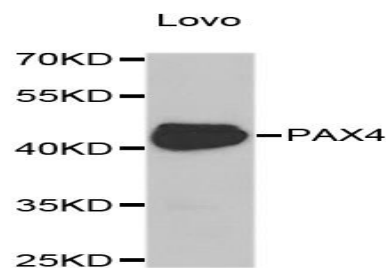
WB: 1:500~1:2000

**Storage&Stability:**

Store at 4 °C short term. Aliquot and store at -20 °C long term. Avoid freeze-thaw cycles.

**Specificity:**

PAX4 polyclonal antibody detects endogenous levels of PAX4 protein.

**DATA:**

Western blot analysis of extracts of Lovo cell lines, using PAX4 antibody.

**Note:**

For research use only, not for use in diagnostic procedure.

**Bioworld Technology, Inc.**

Add: 1660 South Highway 100, Suite 500 St. Louis Park, MN 55416, USA.

Email: [info@bioworld.com](mailto:info@bioworld.com)

Tel: 6123263284

Fax: 6122933841

**Bioworld technology, co. Ltd.**

Add: No 9, weidi road Qixia District Nanjing, 210046, P. R. China.

Email: [info@biogot.com](mailto:info@biogot.com)

Tel: 0086-025-68037686

Fax: 0086-025-68035151