

## H2-Aa polyclonal antibody

Catalog: BS77661

Host: Rabbit

Reactivity: Human, Mouse

### BackGround:

Enables peptide antigen binding activity. Involved in response to interferon-gamma. Acts upstream of or within antigen processing and presentation of exogenous peptide antigen via MHC class II and positive regulation of T cell differentiation. Located in external side of plasma membrane and lysosome. Part of MHC class II protein complex. Is expressed in central nervous system; retina; and thymus primordium. Human ortholog(s) of this gene implicated in several diseases, including autoimmune disease (multiple); gastrointestinal system cancer (multiple); glomerulonephritis (multiple); hematologic cancer (multiple); and systemic sclerosis (multiple). Orthologous to several human genes including HLA-DQA1 (major histocompatibility complex, class II, DQ alpha 1).

### Product:

1mg/ml in PBS with 0.02% sodium azide, 50% glycerol, pH7.2

### Molecular Weight:

28KDa

### Swiss-Prot:

P14434

### Purification&Purity:

The antibody was affinity-purified from rabbit antiserum by affinity-chromatography using epitope-specific immunogen and the purity is > 95% (by SDS-PAGE).

### Applications:

WB, 1:500 - 1:2000

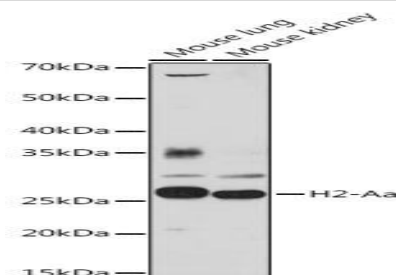
### Storage&Stability:

Store at 4 °C short term. Aliquot and store at -20 °C long term. Avoid freeze-thaw cycles.

### Modification:

Unmodification

### DATA:



Western blot analysis of extracts of various cell lines, using H2-Aa antibody at 1:1000 dilution. Secondary antibody: HRP Goat Anti-Rabbit IgG at 1:10000 dilution. Lysates/proteins: 25ug per lane. Blocking buffer: 3% nonfat dry milk in TBST. Detection: ECL Basic Kit. Exposure time: 60s.

### Note:

For research use only, not for use in diagnostic procedure.

### Bioworld Technology, Inc.

Add: 1660 South Highway 100, Suite 500 St. Louis Park, MN 55416, USA.

Email: [info@bioworld.com](mailto:info@bioworld.com)

Tel: 6123263284

Fax: 6122933841

### Bioworld technology, co. Ltd.

Add: No 9, weidi road Qixia District Nanjing, 210046, P. R. China.

Email: [info@biogot.com](mailto:info@biogot.com)

Tel: 0086-025-68037686

Fax: 0086-025-68035151