

CDC25C polyclonal antibody

Catalog: BS76919

Host: Rabbit

Reactivity: Human, Mouse, Rat

BackGround:

This gene encodes a conserved protein that plays a key role in the regulation of cell division. The encoded protein directs dephosphorylation of cyclin B-bound CDC2 and triggers entry into mitosis. It also suppresses p53-induced growth arrest. Multiple alternatively spliced transcript variants of this gene have been described.

Product:

Rabbit IgG, 1mg/ml in PBS with 0.02% sodium azide, 50% glycerol, pH7.3.

Molecular Weight:

~ 75 kDa

Swiss-Prot:

P30307

Purification&Purity:

The antibody was affinity-purified from rabbit antiserum by affinity-chromatography using epitope-specific immunogen and the purity is > 95% (by SDS-PAGE).

Applications:

WB, 1:500 - 1:1000 | IHC, 1:100 - 1:200 | IF/ICC, 1:100 - 1:500

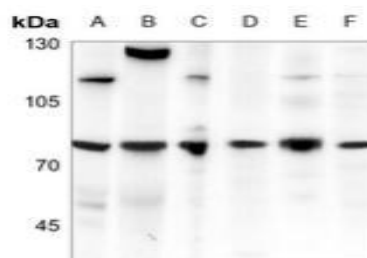
Storage&Stability:

Store at 4 °C short term. Aliquot and store at -20 °C long term. Avoid freeze-thaw cycles.

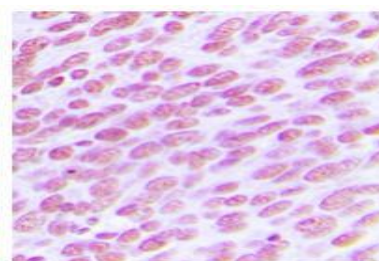
Specificity:

CDC25C polyclonal antibody detects endogenous levels of CDC25C protein.

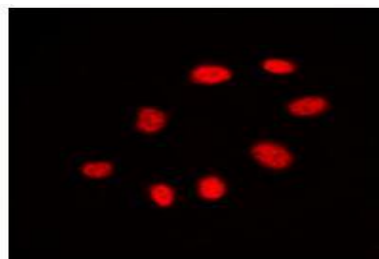
DATA:



Western blot analysis of CDC25C expression in rat brain (A), mouse lung (B), CT26 (C), PC12 (D), U87MG (E), HeLa (F) whole cell lysates.



Immunohistochemical analysis of CDC25C staining in human breast cancer formalin fixed paraffin embedded tissue section.



Immunofluorescent analysis of CDC25C staining in A431 cells.

Note:

For research use only, not for use in diagnostic procedure.

Bioworld Technology, Inc.

Add: 1660 South Highway 100, Suite 500 St. Louis Park, MN 55416, USA.

Email: info@bioworld.com

Tel: 6123263284

Fax: 6122933841

Bioworld technology, co. Ltd.

Add: No 9, weidi road Qixia District Nanjing, 210046, P. R. China.

Email: info@biogot.com

Tel: 0086-025-68037686

Fax: 0086-025-68035151