

RBM45 polyclonal antibody

Catalog: BS75487

Host: Rabbit

Reactivity: Mouse

BackGround:

This gene encodes a member of the RNA recognition motif (RRM)-type RNA-binding family of proteins. This protein exhibits preferential binding to poly(C) RNA. Initial cloning of this gene found that the rat ortholog was dynamically expressed in the developing rat brain. This protein has been localized to inclusion bodies in the brain and spinal cord of amyotrophic lateral sclerosis and Alzheimer's patients. A pseudogene has been identified on chromosome 8.

Product:

1mg/ml in PBS with 0.02% sodium azide, 50% glycerol, pH7.2

Molecular Weight:

52-54kDa

Swiss-Prot:

Q8IUH3

Purification&Purity:

The antibody was affinity-purified from rabbit antiserum by affinity-chromatography using epitope-specific immunogen and the purity is > 95% (by SDS-PAGE).

Applications:

WB, 1:500 - 1:2000

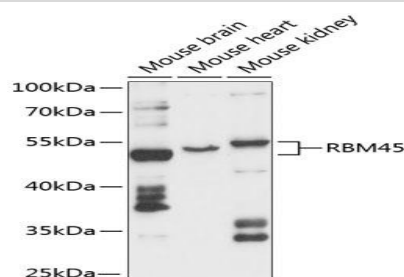
Storage&Stability:

Store at 4 °C short term. Aliquot and store at -20 °C long term. Avoid freeze-thaw cycles.

Modification:

Unmodification

DATA:



Western blot analysis of extracts of various cell lines, using RBM45 antibody at 1:3000 dilution. Secondary antibody: HRP Goat Anti-Rabbit IgG at 1:10000 dilution. Lysates/proteins: 25ug per lane. Blocking buffer: 3% nonfat dry milk in TBST. Detection: ECL Basic Kit. Exposure time: 10s.

Note:

For research use only, not for use in diagnostic procedure.

Bioworld Technology, Inc.

Add: 1660 South Highway 100, Suite 500 St. Louis Park, MN 55416, USA.

Email: info@bioworld.com

Tel: 6123263284

Fax: 6122933841

Bioworld technology, co. Ltd.

Add: No 9, weidi road Qixia District Nanjing, 210046, P. R. China.

Email: info@biogot.com

Tel: 0086-025-68037686

Fax: 0086-025-68035151