

**LHX8 polyclonal antibody**

Catalog: BS75341

Host: Rabbit

Reactivity: Human

**BackGround:**

The protein encoded by this gene is a member of the LIM homeobox family of proteins, which are involved in patterning and differentiation of various tissue types. These proteins contain two tandemly repeated cysteine-rich double-zinc finger motifs known as LIM domains, in addition to a DNA-binding homeodomain. This family member is a transcription factor that plays a role in tooth morphogenesis. It is also involved in oogenesis and in neuronal differentiation. This gene is a candidate gene for cleft palate, and it is also associated with odontoma formation. Alternative splicing of this gene results in multiple transcript variants.

**Product:**

1mg/ml in PBS with 0.02% sodium azide, 50% glycerol, pH7.2

**Molecular Weight:****Swiss-Prot:**

Q68G74

**Purification&Purity:**

The antibody was affinity-purified from rabbit antiserum by affinity-chromatography using epitope-specific im-

munogen and the purity is > 95% (by SDS-PAGE).

**Applications:**

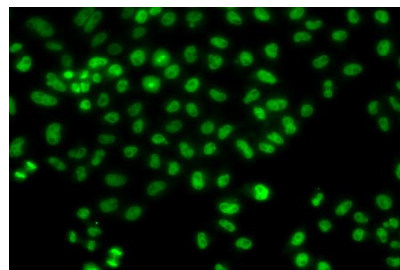
WB, 1:500 - 1:2000 | IF/ICC, 1:50 - 1:200

**Storage&Stability:**

Store at 4 °C short term. Aliquot and store at -20 °C long term. Avoid freeze-thaw cycles.

**Modification:**

Unmodification

**DATA:**

Immunofluorescence analysis of HeLa cells using LHX8 antibody .

**Note:**

For research use only, not for use in diagnostic procedure.

**Bioworld Technology, Inc.**

Add: 1660 South Highway 100, Suite 500 St. Louis Park, MN 55416, USA.

Email: [info@bioworld.com](mailto:info@bioworld.com)

Tel: 6123263284

Fax: 6122933841

**Bioworld technology, co. Ltd.**

Add: No 9, weidi road Qixia District Nanjing, 210046, P. R. China.

Email: [info@biogol.com](mailto:info@biogol.com)

Tel: 0086-025-68037686

Fax: 0086-025-68035151