

CAMK1D polyclonal antibody

Catalog: BS75335

Host: Rabbit

Reactivity: Human, Mouse, Rat

BackGround:

This gene is a member of the calcium/calmodulin-dependent protein kinase 1 family, a sub-family of the serine/threonine kinases. The encoded protein is a component of the calcium-regulated calmodulin-dependent protein kinase cascade. It has been associated with multiple processes including regulation of granulocyte function, activation of CREB-dependent gene transcription, aldosterone synthesis, differentiation and activation of neutrophil cells, and apoptosis of erythroleukemia cells. Alternatively spliced transcript variants encoding different isoforms of this gene have been described.

Product:

1mg/ml in PBS with 0.02% sodium azide, 50% glycerol, pH7.2

Molecular Weight:

Refer to figures

Swiss-Prot:

Q8IU85

Purification&Purity:

The antibody was affinity-purified from rabbit antiserum by affinity-chromatography using epitope-specific im-

munogen and the purity is > 95% (by SDS-PAGE).

Applications:

WB, 1:500 - 1:2000 | IF/ICC, 1:50 - 1:200

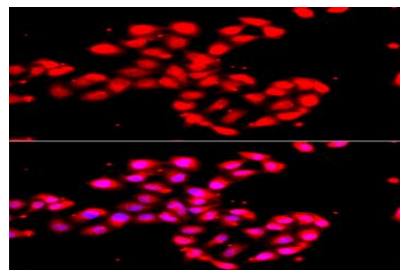
Storage&Stability:

Store at 4 °C short term. Aliquot and store at -20 °C long term. Avoid freeze-thaw cycles.

Modification:

Unmodification

DATA:



Immunofluorescence analysis of A549 cells using CAMK1D antibody .
Blue: DAPI for nuclear staining.

Note:

For research use only, not for use in diagnostic procedure.

Bioworld Technology, Inc.

Add: 1660 South Highway 100, Suite 500 St. Louis Park, MN 55416, USA.

Email: info@bioworld.com

Tel: 6123263284

Fax: 6122933841

Bioworld technology, co. Ltd.

Add: No 9, weidi road Qixia District Nanjing, 210046, P. R. China.

Email: info@biogot.com

Tel: 0086-025-68037686

Fax: 0086-025-68035151