

KIRREL2 polyclonal antibody

Catalog: BS75196

Host: Rabbit

Reactivity: Human, Mouse, Rat

BackGround:

This gene encodes a type I transmembrane protein and member of the immunoglobulin superfamily of cell adhesion molecules. The encoded protein localizes to adherens junctions in pancreatic beta cells and regulates insulin secretion. Autoantibodies against the encoded protein have been detected in serum from patients with type 1 diabetes. This gene may also play a role in glomerular development and decreased expression of this gene has been observed in human glomerular diseases. This gene and the related opposite-strand gene nephrin (GeneID: 527362) are regulated by a bidirectional promoter.

Product:

1mg/ml in PBS with 0.02% sodium azide, 50% glycerol, pH7.2

Molecular Weight:

95kDa

Swiss-Prot:

Q6UWL6

Purification&Purity:

The antibody was affinity-purified from rabbit antiserum by affinity-chromatography using epitope-specific immunogen and the purity is > 95% (by SDS-PAGE).

Applications:

WB, 1:1000 - 1:2000

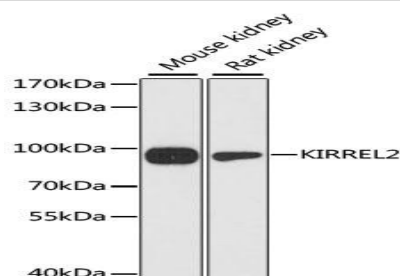
Storage&Stability:

Store at 4 °C short term. Aliquot and store at -20 °C long term. Avoid freeze-thaw cycles.

Modification:

Unmodification

DATA:



Western blot analysis of extracts of various cell lines, using KIRREL2 antibody at 1:3000 dilution. Secondary antibody: HRP Goat Anti-Rabbit IgG at 1:10000 dilution. Lysates/proteins: 25ug per lane. Blocking buffer: 3% nonfat dry milk in TBST. Detection: ECL Basic Kit. Exposure time: 90s.

Note:

For research use only, not for use in diagnostic procedure.

Bioworld Technology, Inc.

Add: 1660 South Highway 100, Suite 500 St. Louis Park, MN 55416, USA.

Email: info@bioworld.com

Tel: 6123263284

Fax: 6122933841

Bioworld technology, co. Ltd.

Add: No 9, weidi road Qixia District Nanjing, 210046, P. R. China.

Email: info@biogot.com

Tel: 0086-025-68037686

Fax: 0086-025-68035151