

## NLK polyclonal antibody

Catalog: BS7516

Host: Rabbit

Reactivity: Human, Mouse, Rat

### BackGround:

The activation of signal transduction pathways by growth factors, hormones and neurotransmitters is mediated through two closely related MAP kinases, p44 and p42, designated extracellular-signal related kinase 1 (ERK 1) and ERK 2, respectively. ERK proteins are regulated by dual phosphorylation at specific tyrosine and threonine sites mapping within a characteristic Thr-Glu-Tyr motif. Phosphorylation at both Thr-183 and Tyr-185 is required for full enzymatic activation. In response to activation, MAP kinases phosphorylate downstream components on serine and threonine (5,6). Nlk, or nemo-like kinase, is a murine homolog of the Drosophila nemo (nmo) gene. Nlk and Nmo have sequence homology to both the ERK MAP kinases and the cyclin dependent kinases. Nlk is a nuclear protein with the ability to autophosphorylate.

### Product:

Rabbit IgG, 1mg/ml in PBS with 0.02% sodium azide, 50% glycerol, pH7.2

### Molecular Weight:

~ 68 kDa

### Swiss-Prot:

Q9UBE8

### Purification&Purity:

The antibody was affinity-purified from rabbit antiserum

by affinity-chromatography using epitope-specific immunogen and the purity is > 95% (by SDS-PAGE).

### Applications:

WB: 1:500~1:2000

IHC: 1:50~1:200

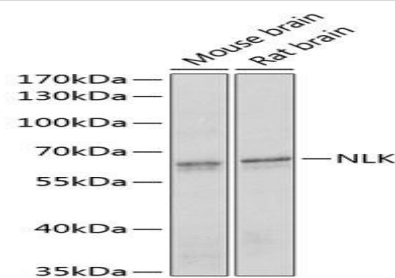
### Storage&Stability:

Store at 4 °C short term. Aliquot and store at -20 °C long term. Avoid freeze-thaw cycles.

### Specificity:

NLK polyclonal antibody detects endogenous levels of NLK protein.

### DATA:



Western blot analysis of NLK polyclonal antibody

### Note:

For research use only, not for use in diagnostic procedure.

### Bioworld Technology, Inc.

Add: 1660 South Highway 100, Suite 500 St. Louis Park, MN 55416, USA.

Email: [info@bioworld.com](mailto:info@bioworld.com)

Tel: 6123263284

Fax: 6122933841

### Bioworld technology, co. Ltd.

Add: No 9, weidi road Qixia District Nanjing, 210046, P. R. China.

Email: [info@biogot.com](mailto:info@biogot.com)

Tel: 0086-025-68037686

Fax: 0086-025-68035151