

TMEM27 polyclonal antibody

Catalog: BS74984

Host: Rabbit

Reactivity: Mouse, Rat

BackGround:

This gene encodes a type 1 transmembrane protein that is important for trafficking amino acid transporters to the apical brush border of proximal tubules. The encoded protein binds to amino acid transporters and regulates their expression on the plasma membrane. It also plays a role in controlling insulin exocytosis by regulating formation of the SNARE (soluble N-ethylmaleimide-sensitive-factor attachment protein receptor) complex in pancreatic beta cells. The extracellular domain of the encoded protein may be cleaved and shed from the plasma membrane specifically in pancreatic beta cells.

Product:

1mg/ml in PBS with 0.02% sodium azide, 50% glycerol, pH7.2

Molecular Weight:

29kDa

Swiss-Prot:

Q9HBJ8

Purification&Purity:

The antibody was affinity-purified from rabbit antiserum by affinity-chromatography using epitope-specific immunogen and the purity is > 95% (by SDS-PAGE).

Applications:

WB, 1:500 - 1:2000

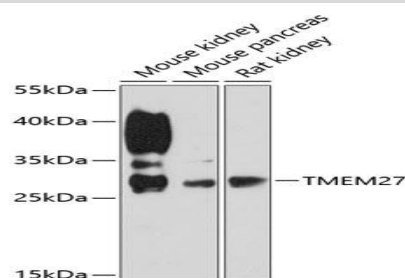
Storage&Stability:

Store at 4 °C short term. Aliquot and store at -20 °C long term. Avoid freeze-thaw cycles.

Modification:

Unmodification

DATA:



Western blot analysis of extracts of various cell lines, using TMEM27 antibody at 1:3000 dilution. Secondary antibody: HRP Goat Anti-Rabbit IgG at 1:10000 dilution. Lysates/proteins: 25ug per lane. Blocking buffer: 3% nonfat dry milk in TBST. Detection: ECL Basic Kit. Exposure time: 90s.

Note:

For research use only, not for use in diagnostic procedure.

Bioworld Technology, Inc.

Add: 1660 South Highway 100, Suite 500 St. Louis Park, MN 55416, USA.

Email: info@bioworld.com

Tel: 6123263284

Fax: 6122933841

Bioworld technology, co. Ltd.

Add: No 9, weidi road Qixia District Nanjing, 210046, P. R. China.

Email: info@biogot.com

Tel: 0086-025-68037686

Fax: 0086-025-68035151