

ENO2 polyclonal antibody

Catalog: BS74826

Host: Rabbit

Reactivity: Human, Mouse, Rat

BackGround:

This gene encodes one of the three enolase isoenzymes found in mammals. This isoenzyme, a homodimer, is found in mature neurons and cells of neuronal origin. A switch from alpha enolase to gamma enolase occurs in neural tissue during development in rats and primates.

Product:

Rabbit IgG, 1mg/ml in PBS with 0.02% sodium azide, 50% glycerol, pH7.2

Molecular Weight:

48KDa

Swiss-Prot:

P09104

Purification&Purity:

The antibody was affinity-purified from rabbit antiserum by affinity-chromatography using epitope-specific immunogen and the purity is > 95% (by SDS-PAGE).

Applications:

WB, 1:500 - 1:1000 | IF/ICC, 1:100 - 1:500 | IHC, 1:100 - 1:200 | FC, 1:100 - 1:200

Storage&Stability:

Store at 4 °C short term. Aliquot and store at -20 °C long term. Avoid freeze-thaw cycles.

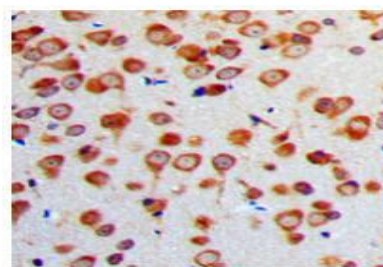
Specificity:

ENO2 polyclonal antibody detects endogenous levels of ENO2 protein.

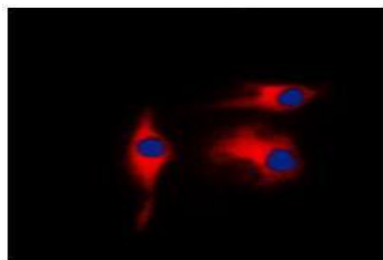
DATA:



Western blot analysis of ENO2 expression in HEK293T (A), HeLa (B), U2OS (C), mouse brain (D), mouse eyes (E), rat brain (F), rat liver (G) whole cell lysates.



Immunohistochemical analysis of ENO2 staining in human brain formalin fixed paraffin embedded tissue section.



Immunofluorescent analysis of ENO2 staining in K562 cells.

Note:

For research use only, not for use in diagnostic procedure.

Bioworld Technology, Inc.

Add: 1660 South Highway 100, Suite 500 St. Louis Park, MN 55416, USA.

Email: info@bioworld.com

Tel: 6123263284

Fax: 6122933841

Bioworld technology, co. Ltd.

Add: No 9, weidi road Qixia District Nanjing, 210046, P. R. China.

Email: info@biogol.com

Tel: 0086-025-68037686

Fax: 0086-025-68035151