

TFCP2L1 polyclonal antibody

Catalog: BS74759

Host: Rabbit

Reactivity: Human

BackGround:

Transcription factor that facilitates establishment and maintenance of pluripotency in embryonic stem cells (ESCs). With KLF2, acts as the major effector of self-renewal that mediates induction of pluripotency downstream of LIF/STAT3 and Wnt/beta-catenin signaling (By similarity). Required for normal duct development in the salivary gland and kidney (By similarity). Coordinates the development of the kidney collecting ducts intercalated (IC and principal (PC cells, which regulate acid-base and salt-water homeostasis, respectively (By similarity). Regulates the expression of IC genes including subunits B1 and D2 of the V-ATPase complex, OXGR1, CA12, SLC4A1, AQP6 and IC-specific transcription factor FOXI1 (By similarity). Regulates also the expression of JAG1 and subsequent notch signaling in the collecting duct (By similarity). JAG1 initiates notch signaling in PCs but inhibits notch signaling in ICs (By similarity). Acts as a transcriptional suppressor that may suppress UBPI-mediated transcriptional activation (By similarity). Modulates the placental expression of CYP11A1.

Product:

1mg/ml in PBS with 0.02% sodium azide, 50% glycerol, pH7.2

Molecular Weight:

58kDa

Swiss-Prot:

Q9NZI6

Purification&Purity:

The antibody was affinity-purified from rabbit antiserum by affinity-chromatography using epitope-specific immunogen and the purity is > 95% (by SDS-PAGE).

Applications:

WB, 1:500 - 1:2000

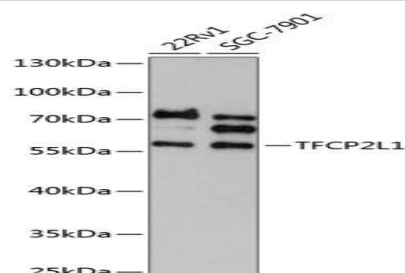
Storage&Stability:

Store at 4 °C short term. Aliquot and store at -20 °C long term. Avoid freeze-thaw cycles.

Modification:

Unmodification

DATA:



Western blot analysis of extracts of various cell lines, using TFCP2L1 antibody at 1:1000 dilution. Secondary antibody: HRP Goat Anti-Rabbit IgG at 1:10000 dilution. Lysates/proteins: 25ug per lane. Blocking buffer: 3% nonfat dry milk in TBST. Detection: ECL Basic Kit. Exposure time: 90s.

Note:

For research use only, not for use in diagnostic procedure.

Bioworld Technology, Inc.

Add: 1660 South Highway 100, Suite 500 St. Louis Park, MN 55416, USA.

Email: info@bioworld.com

Tel: 6123263284

Fax: 6122933841

Bioworld technology, co. Ltd.

Add: No 9, weidi road Qixia District Nanjing, 210046, P. R. China.

Email: info@biogot.com

Tel: 0086-025-68037686

Fax: 0086-025-68035151