

Gsdma polyclonal antibody

Catalog: BS74574

Host: Rabbit

Reactivity: Human, Mouse, Rat

BackGround:

Predicted to enable phosphatidylinositol-4,5-bisphosphate binding activity; phosphatidylinositol-4-phosphate binding activity; and phosphatidylserine binding activity. Predicted to be involved in apoptotic process; defense response to bacterium; and pyroptosis. Predicted to act upstream of or within programmed cell death. Located in cytoplasm. Is expressed in esophagus epithelium; stomach; stomach cardiac region; stomach glandular region; and stomach glandular region mucosa. Orthologous to human GSDMA (gasdermin A).

Product:

1mg/ml in PBS with 0.02% sodium azide, 50% glycerol, pH7.2

Molecular Weight:

49kDa

Swiss-Prot:

Purification&Purity:

The antibody was affinity-purified from rabbit antiserum by affinity-chromatography using epitope-specific immunogen and the purity is > 95% (by SDS-PAGE).

Applications:

WB, 1:500 - 1:2000

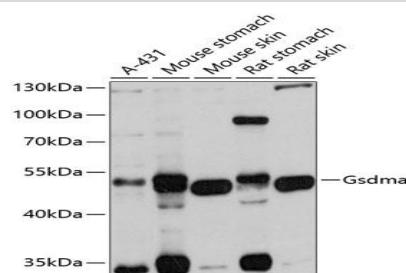
Storage&Stability:

Store at 4 °C short term. Aliquot and store at -20 °C long term. Avoid freeze-thaw cycles.

Modification:

Unmodification

DATA:



Western blot analysis of extracts of various cell lines, using Gsdma antibody at 1:1000 dilution. Secondary antibody: HRP Goat Anti-Rabbit IgG at 1:10000 dilution. Lysates/proteins: 25ug per lane. Blocking buffer: 3% nonfat dry milk in TBST. Detection: ECL Basic Kit. Exposure time: 5s.

Note:

For research use only, not for use in diagnostic procedure.

Bioworld Technology, Inc.

Add: 1660 South Highway 100, Suite 500 St. Louis Park, MN 55416, USA.

Email: info@bioworld.com

Tel: 6123263284

Fax: 6122933841

Bioworld technology, co. Ltd.

Add: No 9, weidi road Qixia District Nanjing, 210046, P. R. China.

Email: info@biogot.com

Tel: 0086-025-68037686

Fax: 0086-025-68035151