

Phospho-GSK3 α -S21 polyclonal antibody

Catalog: BS74159

Host: Rabbit

Reactivity: Human

BackGround:

This gene encodes a multifunctional Ser/Thr protein kinase that is implicated in the control of several regulatory proteins including glycogen synthase, and transcription factors, such as JUN. It also plays a role in the WNT and PI3K signaling pathways, as well as regulates the production of beta-amyloid peptides associated with Alzheimer's disease.

Product:

1mg/ml in PBS with 0.02% sodium azide, 50% glycerol, pH7.2

Molecular Weight:

51kDa

Swiss-Prot:

P49840

Purification&Purity:

The antibody was affinity-purified from rabbit antiserum by affinity-chromatography using epitope-specific immunogen and the purity is > 95% (by SDS-PAGE).

Applications:

WB, 1:500 - 1:2000 | IP, 1:50 - 1:100

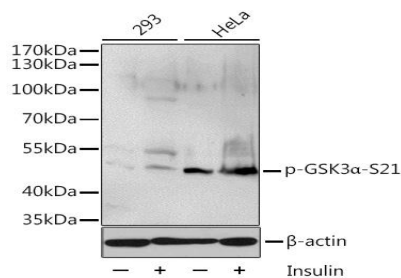
Storage&Stability:

Store at 4 °C short term. Aliquot and store at -20 °C long term. Avoid freeze-thaw cycles.

Modification:

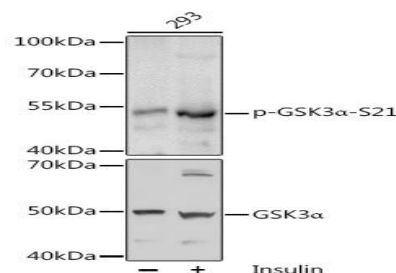
Phosphorylated

DATA:

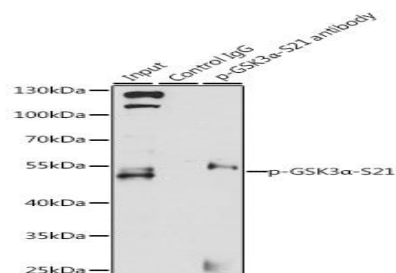


Western blot analysis of extracts of 293 and HeLa cells, using Phos-

pho-GSK3 α -S21 antibody at 1:1000 dilution. 293 cells were treated by Insulin for 10 minutes after serum-starvation overnight. HeLa cells were treated by Insulin for 15 minutes after serum-starvation overnight. Secondary antibody: HRP Goat Anti-Rabbit IgG at 1:10000 dilution. Lysates/proteins: 25ug per lane. Blocking buffer: 3% BSA.



Western blot analysis of extracts of 293 cells, using Phospho-GSK3 α -S21 antibody at 1:1000 dilution or GSK3 α antibody. 293 cells were treated by Insulin for 10 minutes after serum-starvation overnight. Secondary antibody: HRP Goat Anti-Rabbit IgG at 1:10000 dilution. Lysates/proteins: 25ug per lane. Blocking buffer: 3% BSA.



Immunoprecipitation analysis of 200ug extracts of 293T cells, using 3 ug Phospho-GSK3 α -S21 pAb. Western blot was performed from the immunoprecipitate using Phospho-GSK3 α -S21 pAb at a dilution of 1:1000. 293T cells were treated by Insulin at 37 °C for 10 minutes after serum-starvation overnight.

Note:

For research use only, not for use in diagnostic procedure.

Bioworld Technology, Inc.

Add: 1660 South Highway 100, Suite 500 St. Louis Park, MN 55416, USA.

Email: info@bioworld.com

Tel: 6123263284

Fax: 6122933841

Bioworld technology, co. Ltd.

Add: No 9, weidi road Qixia District Nanjing, 210046, P. R. China.

Email: info@biogot.com

Tel: 0086-025-68037686

Fax: 0086-025-68035151