

pan-Tri-Methyl lysine polyclonal antibody

Catalog: BS74118

Host: Rabbit

Reactivity: Human, Mouse, Rat, Other
(Wide Range)

BackGround:

Methylation of lysine residues is a common regulatory post-translational modification (PTM) that results in the mono-, di-, or tri-methylation of lysine at ϵ -amine groups by protein lysine methyltransferases (PKMTs). The post-translational ϵ -amino lysine methylated proteins is an important reversible modification which plays a vital role in the regulation of many cellular processes including chromatin dynamics and gene transcription. Methylation of lysine residues is modulated by specific counteractive enzymes including lysine methylases (KMTs) and demethylases (KDMs). Lysine trimethylation occurs in both histones and non-histone substrates. It has become promising targets for discovery of anti-cancer drugs.

Product:

1mg/ml in PBS with 0.02% sodium azide, 50% glycerol, pH7.2

Molecular Weight:

15-74KDa

Swiss-Prot:

Purification&Purity:

The antibody was affinity-purified from rabbit antiserum by affinity-chromatography using epitope-specific immunogen and the purity is > 95% (by SDS-PAGE).

Applications:

WB, 1:500 - 1:2000 | IP, 1:50 - 1:200 | ChIP, 1:50 - 1:200

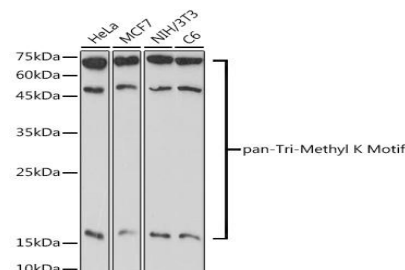
Storage&Stability:

Store at 4 °C short term. Aliquot and store at -20 °C long term. Avoid freeze-thaw cycles.

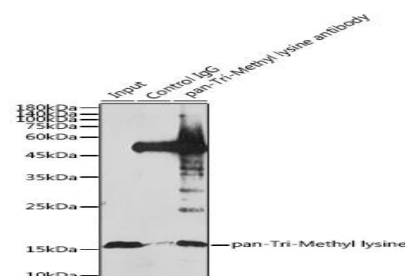
Modification:

Methylated

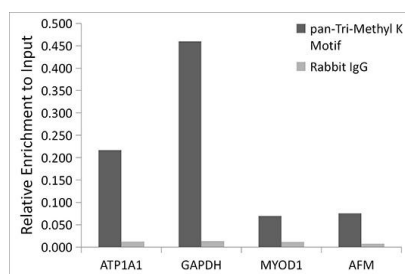
DATA:



Western blot analysis of extracts of various cell lines, using pan-Tri-Methyl K Motif antibody at 1:1000 dilution. Secondary antibody: HRP Goat Anti-Rabbit IgG at 1:10000 dilution. Lysates/proteins: 25ug per lane. Blocking buffer: 3% nonfat dry milk in TBST. Detection: ECL Basic Kit. Exposure time: 60s.



Immunoprecipitation analysis of 1.5mg extracts of HeLa cells using 30ug pan-Tri-Methyl lysine antibody. Western blot was performed from the immunoprecipitate using TriMethyl-Histone H3-K27 antibody at a dilution of 1:1000.



Chromatin immunoprecipitation analysis of extracts of HeLa cells, using pan-Tri-Methyl lysine antibody and rabbit IgG. The amount of immunoprecipitated DNA was checked by quantitative PCR. Histogram was constructed by the ratios of the immunoprecipitated DNA to the input.

Bioworld Technology, Inc.

Add: 1660 South Highway 100, Suite 500 St. Louis Park, MN 55416, USA.

Email: info@bioworld.com

Tel: 6123263284

Fax: 6122933841

Bioworld technology, co. Ltd.

Add: No 9, weidi road Qixia District Nanjing, 210046, P. R. China.

Email: info@biogot.com

Tel: 0086-025-68037686

Fax: 0086-025-68035151



PRODUCT DATA SHEET

Bioworld Technology, Inc.

Note:

For research use only, not for use in diagnostic procedure.

Bioworld Technology, Inc.

Add: 1660 South Highway 100, Suite 500 St. Louis Park,
MN 55416, USA.

Email: info@bioworld.com

Tel: 6123263284

Fax: 6122933841

Bioworld technology, co. Ltd.

Add: No 9, weidi road Qixia District Nanjing, 210046,
P. R. China.

Email: info@biogot.com

Tel: 0086-025-68037686

Fax: 0086-025-68035151