

Pan DiMethyl-lysine polyclonal antibody

Catalog: BS74115

Host: Rabbit

Reactivity: Human, Mouse, Rat

BackGround:

The lysine methylation chemical reaction is the reversible addition of one, two or three methyl groups to the ϵ -nitrogen of a lysine side chain, forming monomethylated, dimethylated and trimethylated derivatives (referred to here as 'Kme1', 'Kme2' and 'Kme3').

Product:

1mg/ml in PBS with 0.02% sodium azide, 50% glycerol, pH7.2

Molecular Weight:

17-48KDa

Swiss-Prot:

Purification&Purity:

The antibody was affinity-purified from rabbit antiserum by affinity-chromatography using epitope-specific immunogen and the purity is > 95% (by SDS-PAGE).

Applications:

WB, 1:500 - 1:2000

Storage&Stability:

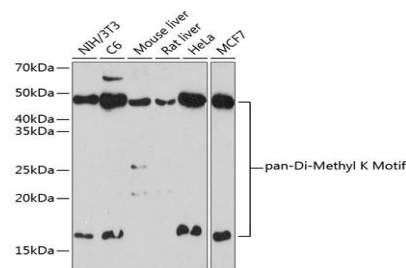
Store at 4 °C short term. Aliquot and store at -20 °C long

term. Avoid freeze-thaw cycles.

Modification:

Methylated

DATA:



Western blot analysis of extracts of various cell lines, using Pan DiMethyl-lysine Rabbit pAb at 1:1000 dilution.

Secondary antibody:

HRP Goat Anti-Rabbit IgG at 1:10000 dilution.

Lysates/proteins: 25ug per lane.

Blocking buffer: 3% nonfat dry milk in TBST.

Detection: ECL Basic Kit.

Exposure time: 3min.

Note:

For research use only, not for use in diagnostic procedure.

Bioworld Technology, Inc.

Add: 1660 South Highway 100, Suite 500 St. Louis Park, MN 55416, USA.

Email: info@bioworld.com

Tel: 6123263284

Fax: 6122933841

Bioworld technology, co. Ltd.

Add: No 9, weidi road Qixia District Nanjing, 210046, P. R. China.

Email: info@biogot.com

Tel: 0086-025-68037686

Fax: 0086-025-68035151