

Phospho-Lamin A/C-S22 polyclonal antibody

Catalog: BS74023

Host: Rabbit

Reactivity: Human, Rat

BackGround:

The nuclear lamina consists of a two-dimensional matrix of proteins located next to the inner nuclear membrane. The lamin family of proteins make up the matrix and are highly conserved in evolution. During mitosis, the lamina matrix is reversibly disassembled as the lamin proteins are phosphorylated. Lamin proteins are thought to be involved in nuclear stability, chromatin structure and gene expression. Vertebrate lamins consist of two types, A and B. Alternative splicing results in multiple transcript variants. Mutations in this gene lead to several diseases: Emery-Dreifuss muscular dystrophy, familial partial lipodystrophy, limb girdle muscular dystrophy, dilated cardiomyopathy, Charcot-Marie-Tooth disease, and Hutchinson-Gilford progeria syndrome.

Product:

1mg/ml in PBS with 0.02% sodium azide, 50% glycerol, pH7.2

Molecular Weight:

69kDa, 78kDa

Swiss-Prot:

P02545

Purification&Purity:

The antibody was affinity-purified from rabbit antiserum by affinity-chromatography using epitope-specific immunogen and the purity is > 95% (by SDS-PAGE).

Applications:

WB, 1:500 - 1:2000 | IP, 1:50 - 1:100

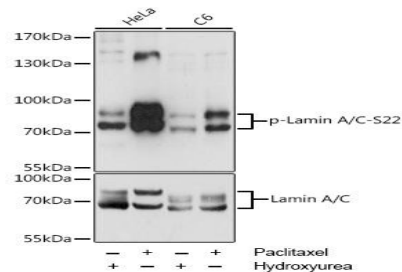
Storage&Stability:

Store at 4 °C short term. Aliquot and store at -20 °C long term. Avoid freeze-thaw cycles.

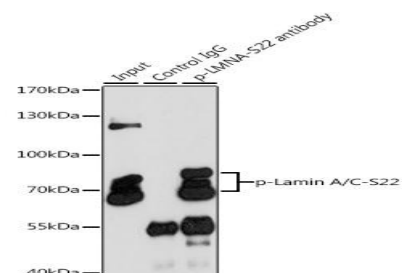
Category:

Phosphorylated Antibodies

DATA:



Western blot analysis of extracts of various cell lines, using Phospho-Lamin A/C-S22 antibody at 1:2000 dilution or Lamin A antibody. HeLa cells were treated by Hydroxyurea at 37°C for 20 hours or treated by Paclitaxel at 37°C for 20 hours. C6 cells were treated by Hydroxyurea at 37°C for 20 hours or treated by Paclitaxel at 37°C for 20 hours. Secondary antibody: HRP Goat Anti-Rabbit IgG at 1:10000 dilution. Lysates/proteins: 25ug per lane. Blocking buffer: 3% BSA. Detection: ECL Enhanced Kit. Exposure time: 1s.



Immunoprecipitation analysis of 200ug extracts of HeLa cells, using 3 ug Phospho-Lamin A/C-S22 pAb. Western blot was performed from the immunoprecipitate using Phospho-Lamin A/C-S22 pAb at a dilution of 1:1000. HeLa cells were treated by Paclitaxel at 37°C for 20 hours.

Note:

For research use only, not for use in diagnostic procedure.

Bioworld Technology, Inc.

Add: 1660 South Highway 100, Suite 500 St. Louis Park, MN 55416, USA.

Email: info@bioworld.com

Tel: 6123263284

Fax: 6122933841

Bioworld technology, co. Ltd.

Add: No 9, weidi road Qixia District Nanjing, 210046, P. R. China.

Email: info@biogot.com

Tel: 0086-025-68037686

Fax: 0086-025-68035151