

IFT74 polyclonal antibody

Catalog: BS72256

Host: Rabbit

Reactivity: Human, Mouse, Rat

BackGround:

This gene encodes a core intraflagellar transport (IFT) protein which belongs to a multi-protein complex involved in the transport of ciliary proteins along axonemal microtubules. IFT proteins are found at the base of the cilium as well as inside the cilium, where they assemble into long arrays between the ciliary base and tip. This protein, together with intraflagellar transport protein 81, binds and transports tubulin within cilia and is required for ciliogenesis. Naturally occurring mutations in this gene are associated with amyotrophic lateral sclerosis--frontotemporal dementia and Bardet-Biedl Syndrome. [provided by RefSeq, Mar 2017]

Product:

1mg/ml in PBS with 0.02% sodium azide, 50% glycerol, pH7.2

Molecular Weight:

80kDa

Swiss-Prot:

Q96LB3

Purification&Purity:

The antibody was affinity-purified from rabbit antiserum by affinity-chromatography using epitope-specific immunogen and the purity is > 95% (by SDS-PAGE).

Applications:

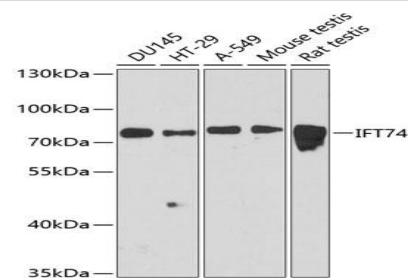
WB, 1:1000 - 1:3000

Storage&Stability:

Store at 4 °C short term. Aliquot and store at -20 °C long term. Avoid freeze-thaw cycles.

Category:

Polyclonal Antibodies

DATA:

Western blot analysis of extracts of various cell lines, using IFT74 antibody at 1:3000 dilution. Secondary antibody: HRP Goat Anti-Rabbit IgG at 1:10000 dilution. Lysates/proteins: 25ug per lane. Blocking buffer: 3% nonfat dry milk in TBST. Detection: ECL Basic Kit. Exposure time: 90s.

Note:

For research use only, not for use in diagnostic procedure.

Bioworld Technology, Inc.

Add: 1660 South Highway 100, Suite 500 St. Louis Park, MN 55416, USA.

Email: info@bioworld.com

Tel: 6123263284

Fax: 6122933841

Bioworld technology, co. Ltd.

Add: No 9, weidi road Qixia District Nanjing, 210046, P. R. China.

Email: info@biogot.com

Tel: 0086-025-68037686

Fax: 0086-025-68035151