

NSD1 polyclonal antibody

Catalog: BS71397

Host: Rabbit

Reactivity: Human, Mouse

BackGround:

The nuclear receptor-binding SET domain-containing protein 1 (NSD1) belongs to a family of proteins which have all been implicated in human malignancy. The protein family includes NSD2 and NSD3, both of which show 70-75% sequence identity with NSD1 but contribute substantially less to overgrowth phenotypes. Defects and microdeletions of the NSD1 gene are involved in Sotos syndrome, childhood acute myeloid leukemia (AML), Weaver syndrome and Beckwith-Wiedemann Syndrome (BWS). The protein functions as a transcriptional intermediary factor capable of influencing transcription, either negatively or positively, depending on the cellular context. NSD1 is a nuclear protein expressed in brain, muscle, spleen, thymus, kidney and, to a lesser extent, lung.

Product:

Rabbit IgG, 1mg/ml in PBS with 0.02% sodium azide, 50% glycerol, pH7.2

Molecular Weight:

~ 297 kDa

Swiss-Prot:

Q96L73

Purification&Purity:

The antibody was affinity-purified from rabbit antiserum

by affinity-chromatography using epitope-specific immunogen and the purity is > 95% (by SDS-PAGE).

Applications:

WB 1:500 - 1:1000

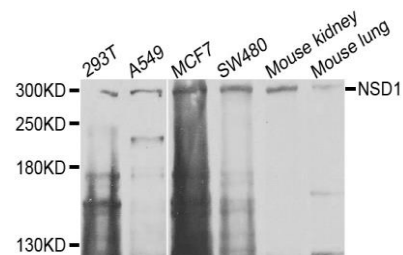
Storage&Stability:

Store at 4 °C short term. Aliquot and store at -20 °C long term. Avoid freeze-thaw cycles.

Specificity:

NSD1 polyclonal antibody detects endogenous levels of NSD1 protein.

DATA:



Western blot analysis of extracts of various cells, using NSD1 antibody.

Note:

For research use only, not for use in diagnostic procedure.

Bioworld Technology, Inc.

Add: 1660 South Highway 100, Suite 500 St. Louis Park, MN 55416, USA.

Email: info@bioworld.com

Tel: 6123263284

Fax: 6122933841

Bioworld technology, co. Ltd.

Add: No 9, weidi road Qixia District Nanjing, 210046, P. R. China.

Email: info@biogot.com

Tel: 0086-025-68037686

Fax: 0086-025-68035151