

FAM20A polyclonal antibody

Catalog: BS71258

Host: Rabbit

Reactivity: Human, Mouse

BackGround:

FA20A belongs to the FAM20 family. All FAM20 proteins contain putative conserved signal sequences as well as a conserved C terminal domain. FA20A is a secreted glycoprotein. It has been found in EML and MPRO cell lines, with low levels in undifferentiated cells. FA20A is induced during maturation to promyelocyte stage of neutrophil differentiation and decreased during neutrophil terminal differentiation.

Product:

0.01M TBS(pH7.4) with 1% BSA, 0.03% Proclin300 and 50% Glycerol.

Molecular Weight:

~ 57 kDa

Swiss-Prot:

Q96MK3

Purification&Purity:

affinity purified by Protein A

Applications:

WB 1:500 - 1:2000

Storage&Stability:

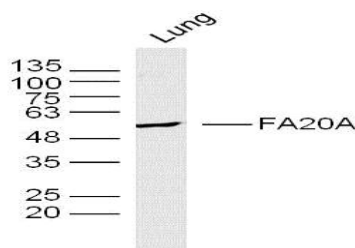
Store at 4 °C short term. Aliquot and store at -20 °C long term. Avoid freeze-thaw cycles.

Specificity:

FAM20A polyclonal antibody detects endogenous levels

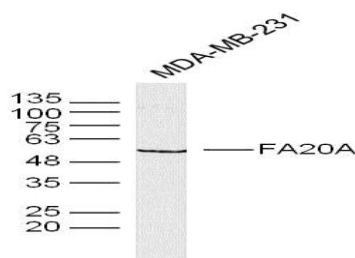
of FAM20A protein.

DATA:



Sample: Lung(Mouse) Lysate at 40 ug

Primary: Anti-FA20A at 1/300 dilution



Sample: MDA-MB-231 (human)Cell Lysate at 40 ug

Primary: Anti-FA20A at 1/300 dilution

Note:

For research use only, not for use in diagnostic procedure.

Bioworld Technology, Inc.

Add: 1660 South Highway 100, Suite 500 St. Louis Park, MN 55416, USA.

Email: info@bioworld.com

Tel: 6123263284

Fax: 6122933841

Bioworld technology, co. Ltd.

Add: No 9, weidi road Qixia District Nanjing, 210046, P. R. China.

Email: info@biogot.com

Tel: 0086-025-68037686

Fax: 0086-025-68035151