

IFNW1 polyclonal antibody

Catalog: BS71091

Host: Rabbit

Reactivity: Mouse, Rat

BackGround:

The protein encoded by this gene is an interferon and possesses antiviral activity. The encoded protein binds to the interferon alpha/beta receptor but not to the interferon gamma receptor. This intronless gene has several pseudogenes spread throughout the genome. IFNW1 (Interferon, Omega 1) is a Protein Coding gene. Among its related pathways are Interferon Pathway and RIG-I/MDA5 mediated induction of IFN-alpha/beta pathways. GO annotations related to this gene include cytokine activity and type I interferon receptor binding. An important paralog of this gene is IFNE.

Product:

Rabbit IgG, 1mg/ml in PBS with 0.02% sodium azide, 50% glycerol, pH7.2

Molecular Weight:

~ 27 kDa

Swiss-Prot:

P05000

Purification&Purity:

The antibody was affinity-purified from rabbit antiserum by affinity-chromatography using epitope-specific immunogen and the purity is > 95% (by SDS-PAGE).

Applications:

WB 1:500 - 1:2000

IHC 1:50 - 1:200

Storage&Stability:

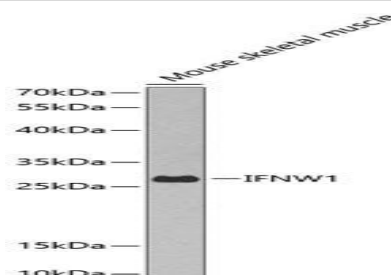
Store at 4 °C short term. Aliquot and store at -20 °C long

term. Avoid freeze-thaw cycles.

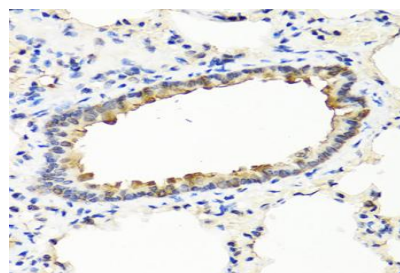
Specificity:

IFNW1 polyclonal antibody detects endogenous levels of IFNW1 protein.

DATA:



Western blot analysis of extract of various cells, using IFNW1 antibody.



Immunohistochemistry of paraffin-embedded rat lung using IFNW1 antibody at dilution of 1:100 (40x lens).

Note:

For research use only, not for use in diagnostic procedure.

Bioworld Technology, Inc.

Add: 1660 South Highway 100, Suite 500 St. Louis Park, MN 55416, USA.

Email: info@bioworld.com

Tel: 6123263284

Fax: 6122933841

Bioworld technology, co. Ltd.

Add: No 9, weidi road Qixia District Nanjing, 210046, P. R. China.

Email: info@biogot.com

Tel: 0086-025-68037686

Fax: 0086-025-68035151