

Lamin A/C (D230) polyclonal antibody

Catalog: BS7014

Host: Rabbit

Reactivity: Human, Mouse, Rat

Background:

Lamins are nuclear membrane structural components that are important in maintaining normal cell functions such as cell cycle control, DNA replication, and chromatin organization. Lamin A/C is cleaved by caspase-6 and serves as a marker for caspase-6 activation. During apoptosis, lamin A/C is specifically cleaved into a large (41-50 kDa) and a small (28 kDa) fragment. The cleavage of lamins results in nuclear disregulation and cell death.

Product:

Rabbit IgG, 1mg/ml in PBS with 0.02% sodium azide, 50% glycerol, pH7.2

Molecular Weight:

~ 64, 73 kDa

Swiss-Prot:

P02545

Purification&Purity:

The antibody was affinity-purified from rabbit antiserum by affinity-chromatography using epitope-specific immunogen and the purity is > 95% (by SDS-PAGE).

Applications:

WB: 1:500~1:1000

IHC: 1:50~1:200

Storage&Stability:

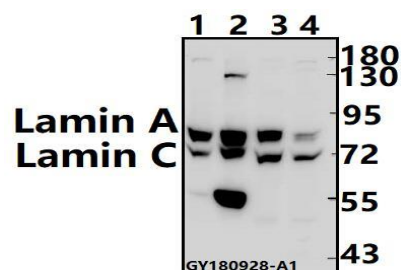
Store at 4 °C short term. Aliquot and store at -20 °C long term. Avoid freeze-thaw cycles.

Specificity:

Lamin A/C (D230) polyclonal antibody detects endoge-

nous levels of Lamin A/C protein.

DATA:



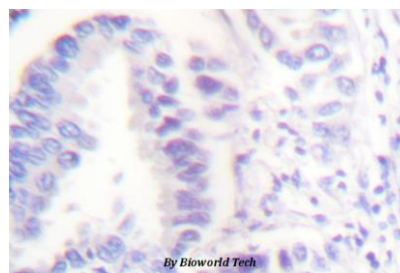
Western blot (WB) analysis of Lamin A/C (D230) at 1:500 dilution

Lane1: AML-12 whole cell lysate(40ug)

Lane2: C6 whole cell lysate(40ug)

Lane3: Panc1 whole cell lysate(40ug)

Lane4: H1792 whole cell lysate(40ug)



Immunohistochemistry (IHC) analysis of Lamin A/C (D230) pAb in paraffin-embedded human lung carcinoma tissue.

Note:

For research use only, not for use in diagnostic procedure.

Bioworld Technology, Inc.

Add: 1660 South Highway 100, Suite 500 St. Louis Park, MN 55416, USA.

Email: info@bioworld.com

Tel: 6123263284

Fax: 6122933841

Bioworld technology, co. Ltd.

Add: No 9, weidi road Qixia District Nanjing, 210046, P. R. China.

Email: info@biogot.com

Tel: 0086-025-68037686

Fax: 0086-025-68035151