

NDRG1 polyclonal antibody

Catalog: BS6786

Host: Rabbit

Reactivity: Human, Mouse, Rat

BackGround:

NDRG1 is ubiquitously expressed, but it is expressed most prominently in placental membranes and prostate, kidney, small intestine and ovary tissue. NDRG1 gene expression is induced by several compounds, including nickel, and produces a protein involved in stress responses, hormone responses, cell growth and differentiation.

Product:

Rabbit IgG, 1mg/ml in PBS with 0.02% sodium azide, 50% glycerol, pH7.2

Molecular Weight:

~ 48 kDa

Swiss-Prot:

Q92597

Purification&Purity:

The antibody was affinity-purified from rabbit antiserum by affinity-chromatography using epitope-specific immunogen and the purity is > 95% (by SDS-PAGE).

Applications:

WB 1:500 - 1:2000

IF 1:50 - 1:200

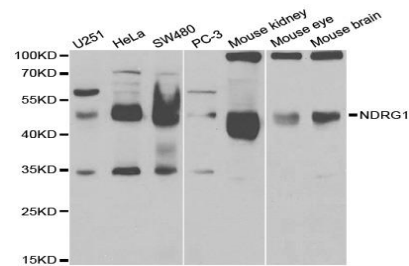
Storage&Stability:

Store at 4 °C short term. Aliquot and store at -20 °C long term. Avoid freeze-thaw cycles.

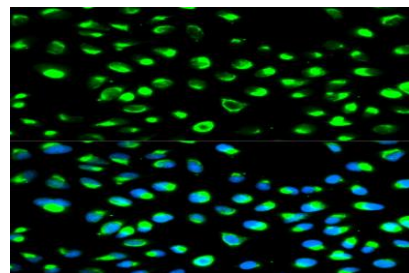
Specificity:

NDRG1 polyclonal antibody detects endogenous levels of NDRG1 protein.

DATA:



Western blot analysis of NDRG1 polyclonal antibody



Immunofluorescence analysis of MCF7 cells, using NDRG1 polyclonal antibody

Note:

For research use only, not for use in diagnostic procedure.

Bioworld Technology, Inc.

Add: 1660 South Highway 100, Suite 500 St. Louis Park, MN 55416, USA.

Email: info@bioworld.com

Tel: 6123263284

Fax: 6122933841

Bioworld technology, co. Ltd.

Add: No 9, weidi road Qixia District Nanjing, 210046, P. R. China.

Email: info@biogot.com

Tel: 0086-025-68037686

Fax: 0086-025-68035151