

## Parvalbumin alpha polyclonal antibody

Catalog: BS67762

Host: Rabbit

Reactivity: Human, Mouse, Rat

### BackGround:

Parvalbumin (PV, PVALB) is a member of the EF-hand family of calcium-binding proteins, containing EF-hand domains with a high affinity for calcium and magnesium. Parvalbumin is expressed in both the soma and in processes of specific subclasses of GABAergic interneurons. Parvalbumin is a slow calcium buffer, meaning it accelerates the initial phase of decay of calcium after an action potential, which likely inhibits facilitation and is thought to regulate short-term synaptic plasticity. Altered function of PV positive interneurons has been implicated in many neurological diseases, such as Alzheimer's disease, autism spectrum disorder, schizophrenia, and bipolar disorder.

### Product:

Liquid in 0.42% Potassium phosphate, 0.87% Sodium chloride, pH 7.3, 30% glycerol, and 0.01% sodium azide.

### Molecular Weight:

~ 14 kDa

### Swiss-Prot:

P20472

### Purification&Purity:

The antibody was purified by immunogen affinity chromatography.

### Applications:

WB (1/500 - 1/1000), IHC (1/50 - 1/200)

### Storage&Stability:

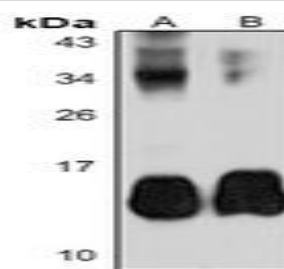
Store at 4 °C short term. Aliquot and store at -20 °C long term. Avoid freeze-thaw cycles.

### Specificity:

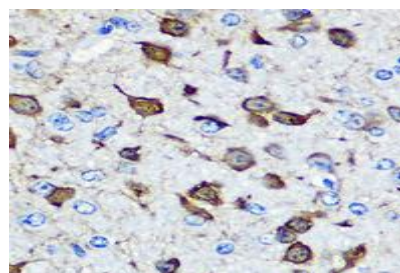
Recognizes endogenous levels of Parvalbumin alpha pro-

tein.

### DATA:



Western blot analysis of Parvalbumin alpha expression in mouse skeletal muscle (A), rat skeletal muscle (B) whole cell lysates.



Immunohistochemical analysis of Parvalbumin alpha staining in human esophageal formalin fixed paraffin embedded tissue section. The section was pre-treated using heat mediated antigen retrieval with sodium citrate buffer (pH 6.0). The section was then incubated with the antibody at room temperature and detected using an HRP conjugated compact polymer system. DAB was used as the chromogen. The section was then counterstained with haematoxylin and mounted with DPX.

### Note:

For research use only, not for use in diagnostic procedure.

### Bioworld Technology, Inc.

Add: 1660 South Highway 100, Suite 500 St. Louis Park, MN 55416, USA.

Email: [info@bioworld.com](mailto:info@bioworld.com)

Tel: 6123263284

Fax: 6122933841

### Bioworld technology, co. Ltd.

Add: No 9, weidi road Qixia District Nanjing, 210046, P. R. China.

Email: [info@biogot.com](mailto:info@biogot.com)

Tel: 0086-025-68037686

Fax: 0086-025-68035151