

## SCE1 polyclonal antibody

Catalog: BS67719

Host: Rabbit

Reactivity: Arabidopsis thaliana

**BackGround:**

SUMO-conjugating enzyme that accepts the SUMO proteins from the E1 SUMO-activating heterodimer SAE1/SAE2 and catalyzes its covalent attachment to other proteins with the E3 SUMO ligases SIZ1 and MMS21. Associates with SIZ1 for sumoylation of the transcription factor GTE3.

**Product:**

Liquid in 0.42% Potassium phosphate, 0.87% Sodium chloride, pH 7.3, 30% glycerol, and 0.01% sodium azide.

**Molecular Weight:**

~ 18 kDa

**Swiss-Prot:**

Q42551

**Purification&Purity:**

The antibody was purified by immunogen affinity chromatography.

**Applications:**

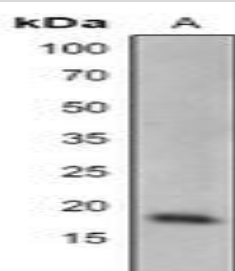
WB (1/500 - 1/2000)

**Storage&Stability:**

Store at 4 °C short term. Aliquot and store at -20 °C long term. Avoid freeze-thaw cycles.

**Specificity:**

Recognizes endogenous levels of SCE1 protein.

**DATA:**

Western blot analysis of SCE1 expression in Arabidopsis thaliana (A) whole cell lysates.

**Note:**

For research use only, not for use in diagnostic procedure.

**Bioworld Technology, Inc.**

Add: 1660 South Highway 100, Suite 500 St. Louis Park, MN 55416, USA.

Email: [info@bioworld.com](mailto:info@bioworld.com)

Tel: 6123263284

Fax: 6122933841

**Bioworld technology, co. Ltd.**

Add: No 9, weidi road Qixia District Nanjing, 210046, P. R. China.

Email: [info@biogot.com](mailto:info@biogot.com)

Tel: 0086-025-68037686

Fax: 0086-025-68035151